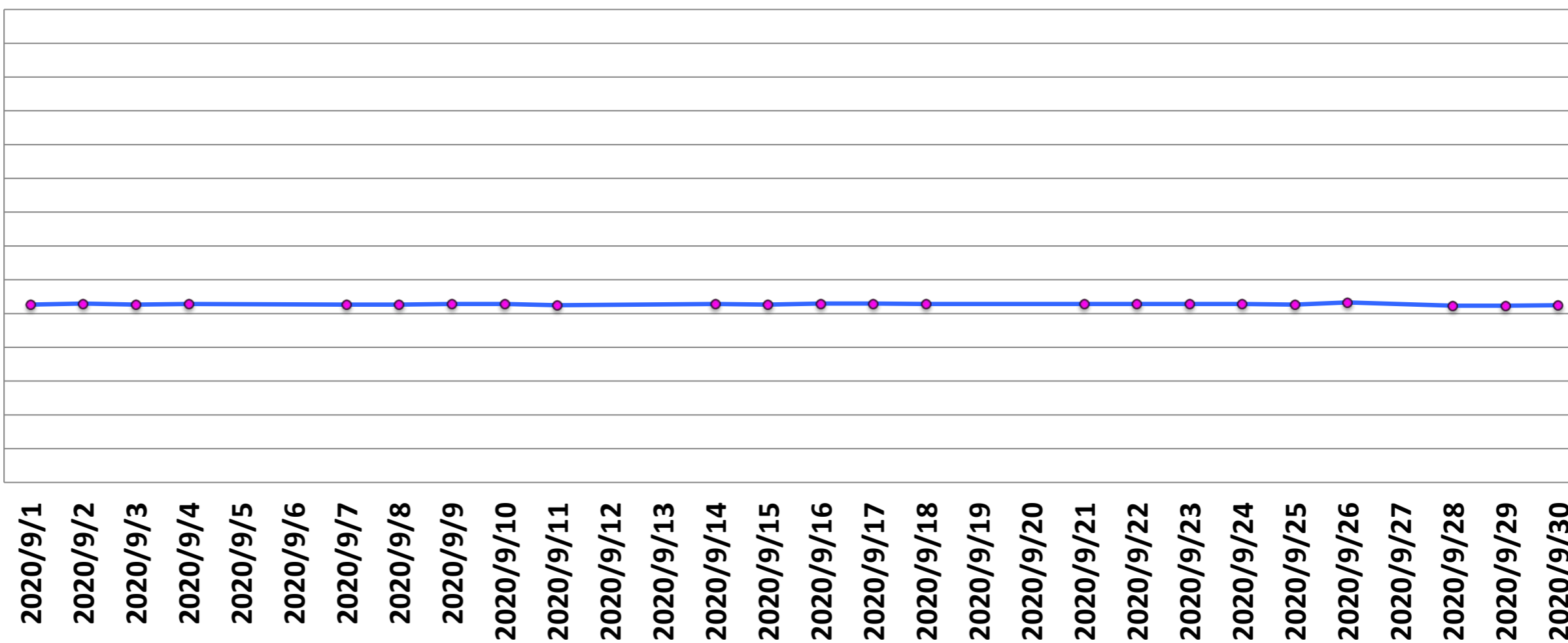


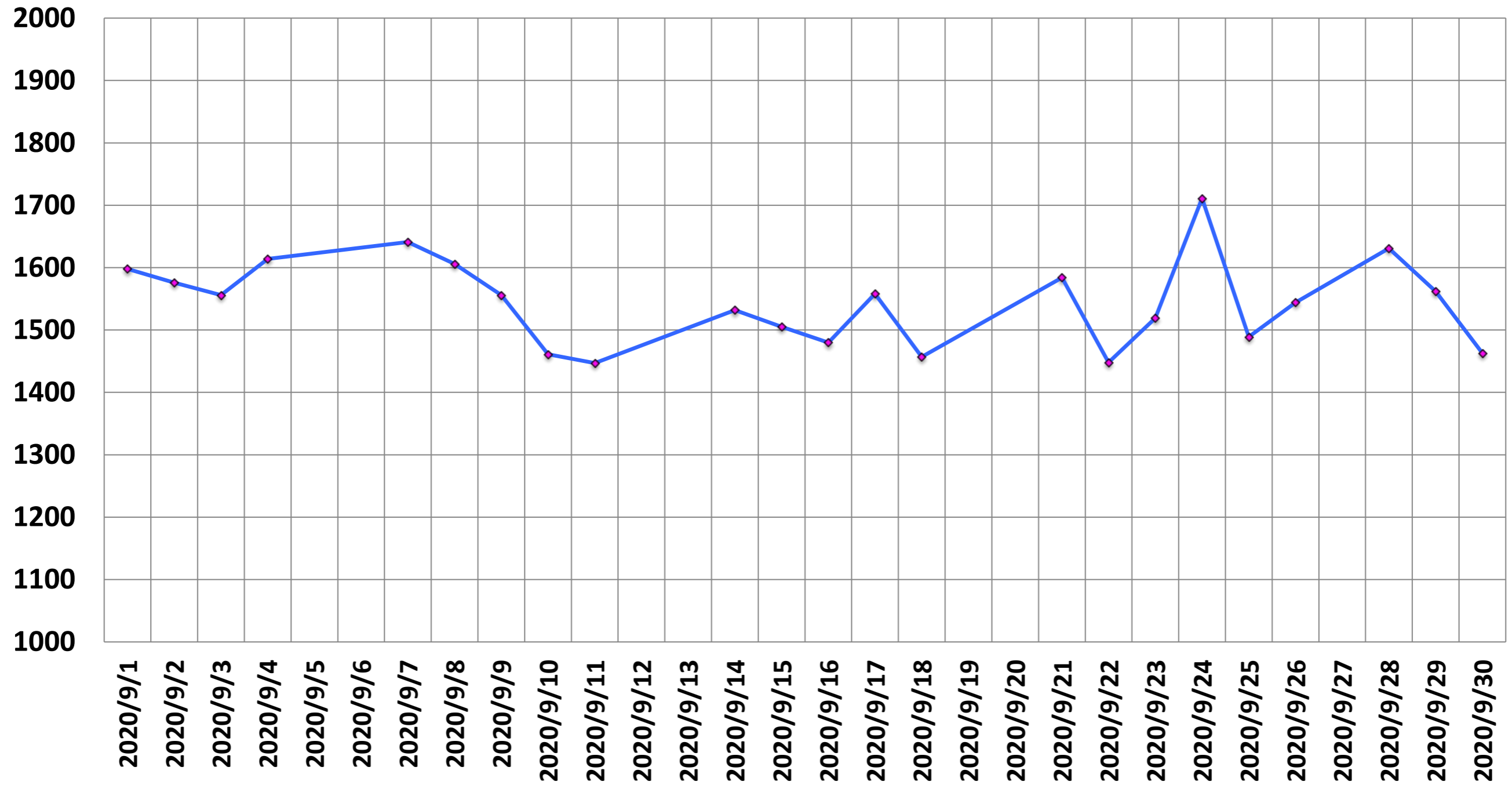
(MHz)

Central Frequency (MHz)

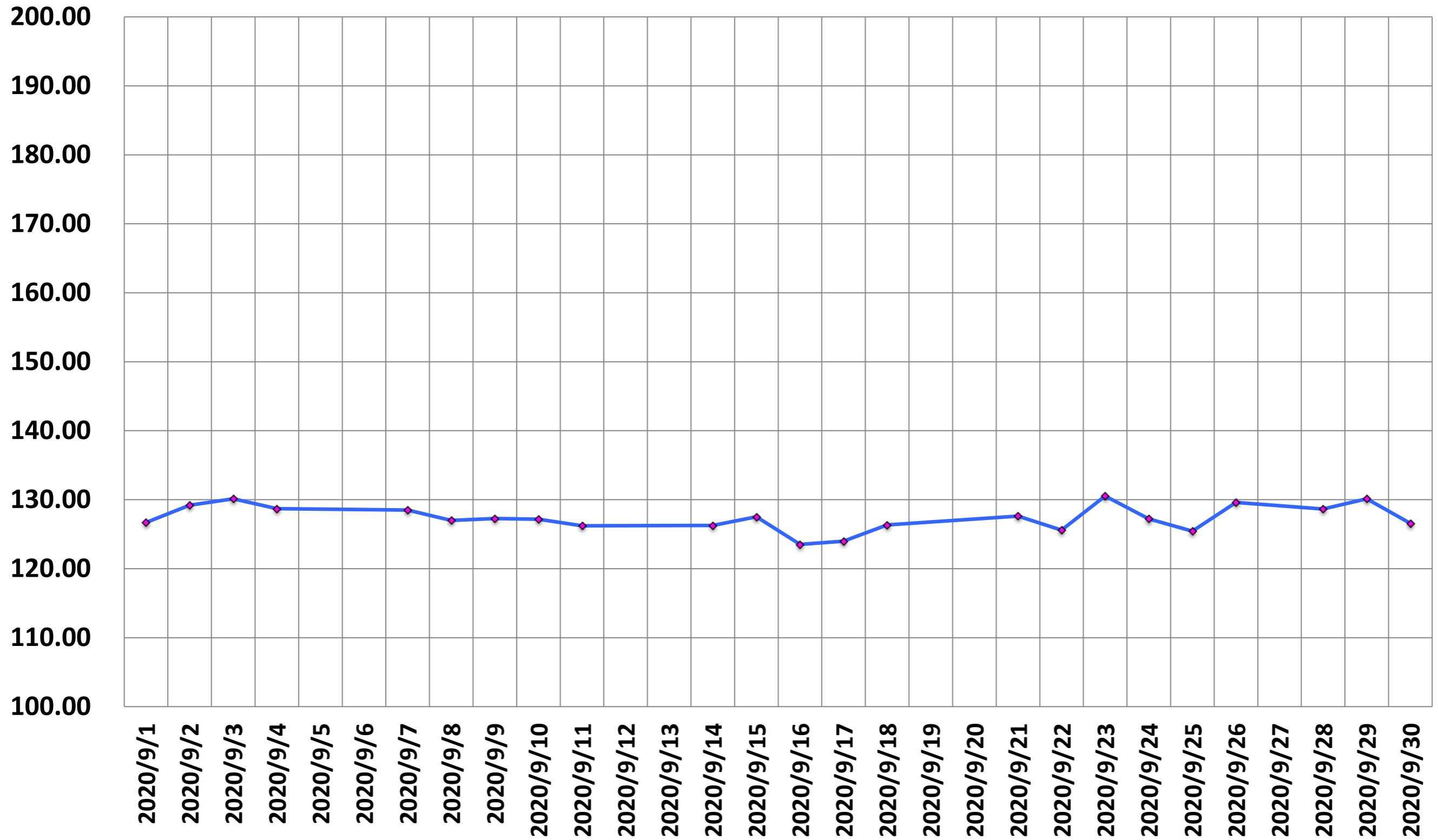
123.2600
123.2595
123.2590
123.2585
123.2580
123.2575
123.2570
123.2565
123.2560
123.2555
123.2550
123.2545
123.2540
123.2535
123.2530



SNR

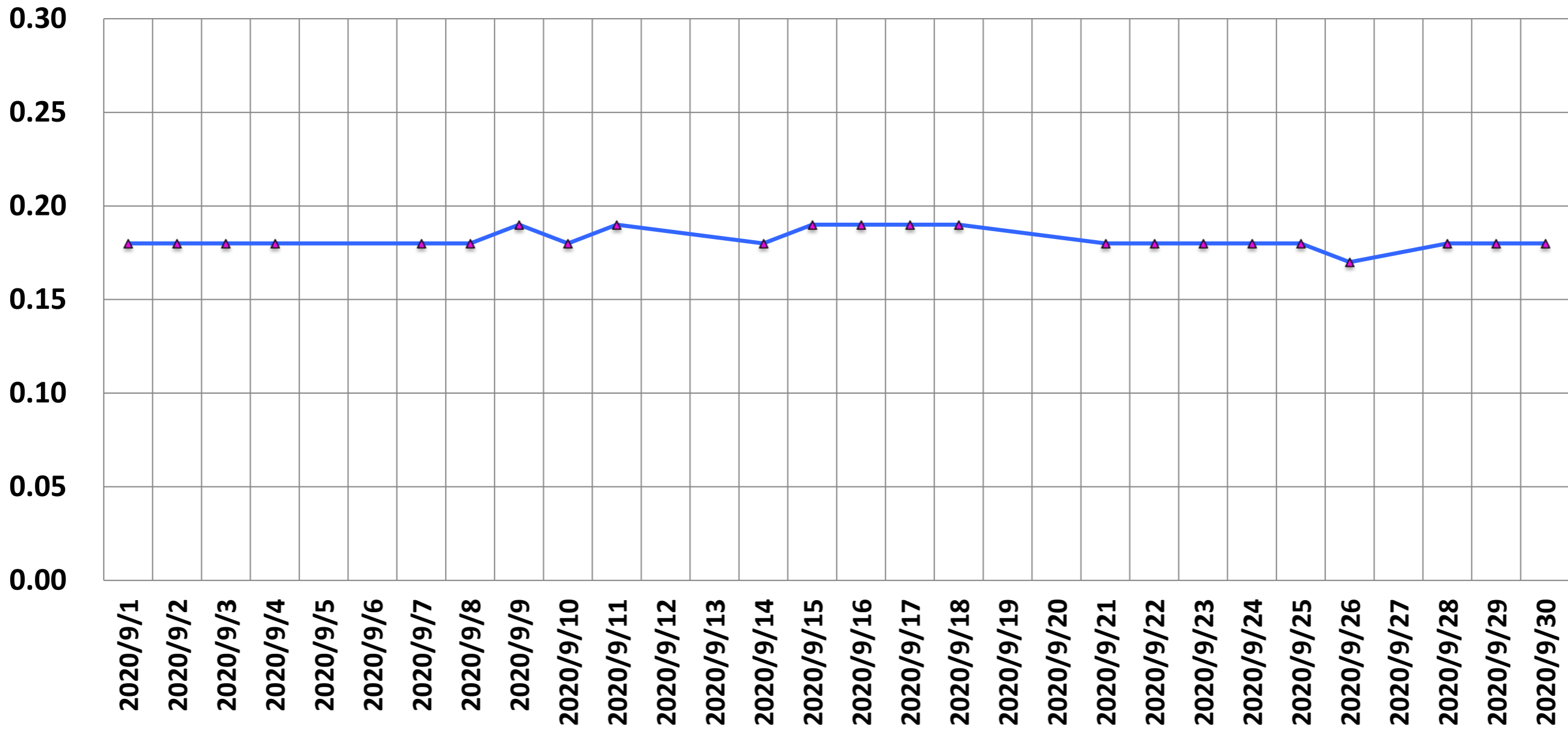


SGR



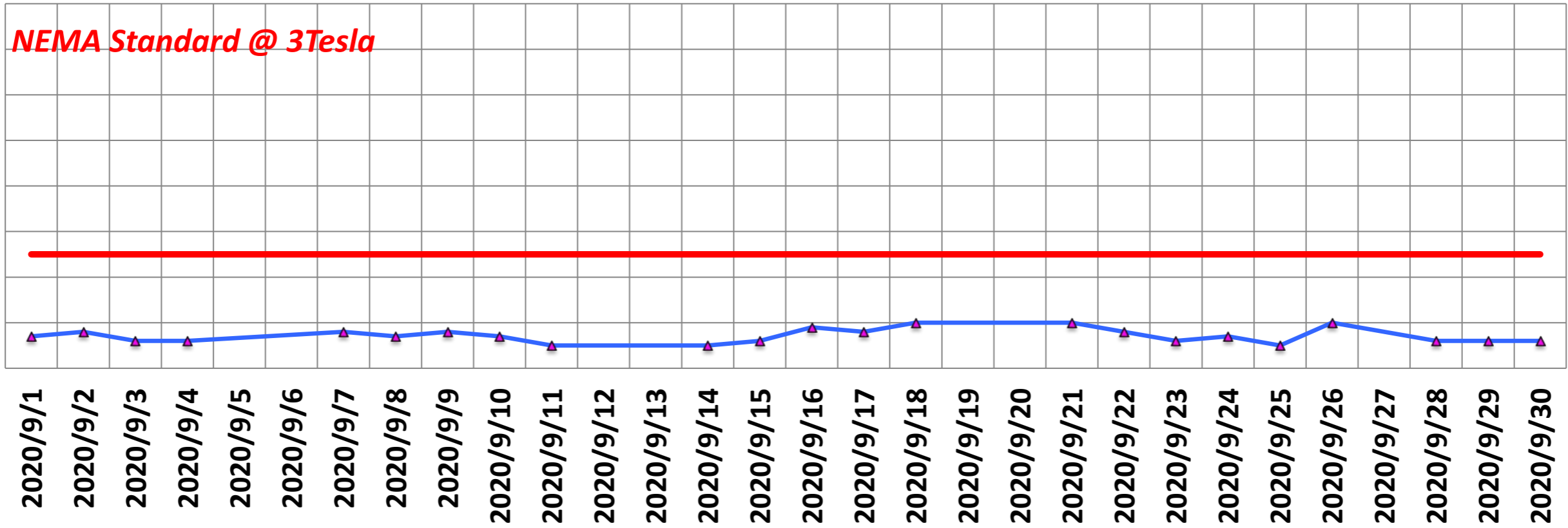
P-P/mean of single voxel (%)

(%)

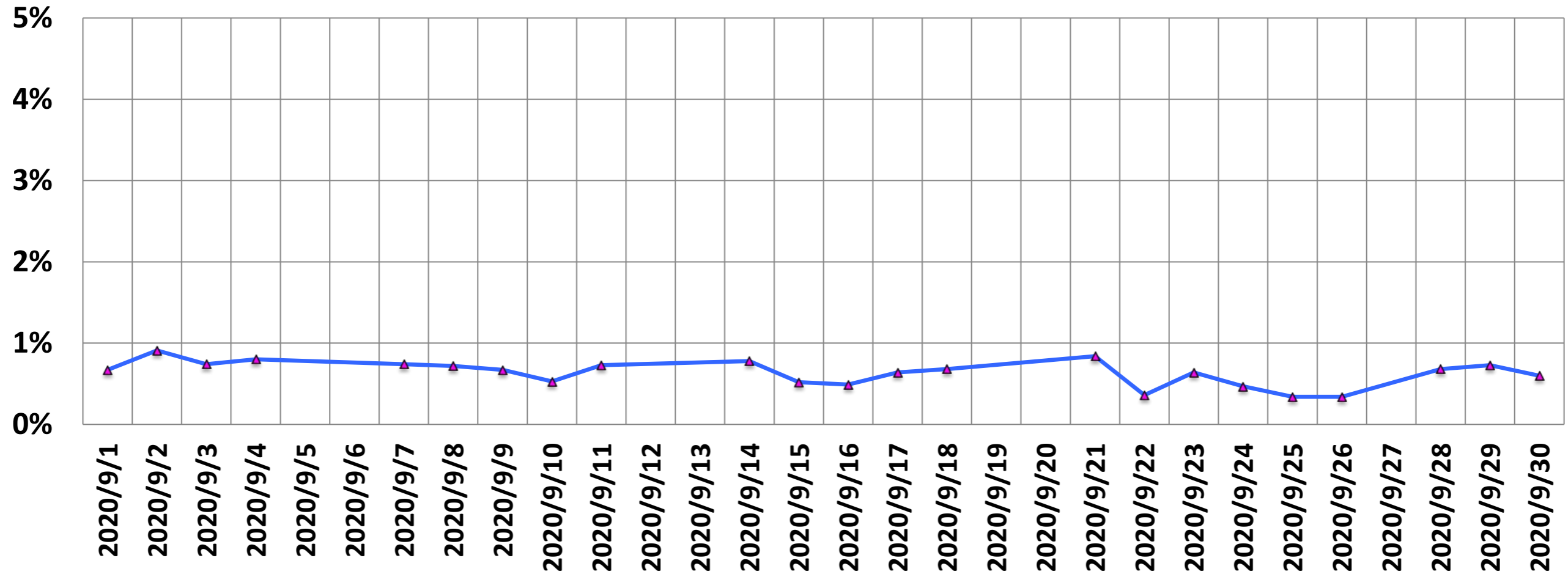


p2p/mean (%)

(%)
0.8
0.7
0.6
0.5
0.4
0.3
0.2
0.1
0



Drift Rate



He Level (%)

He (%)

95.0

90.0

85.0

80.0

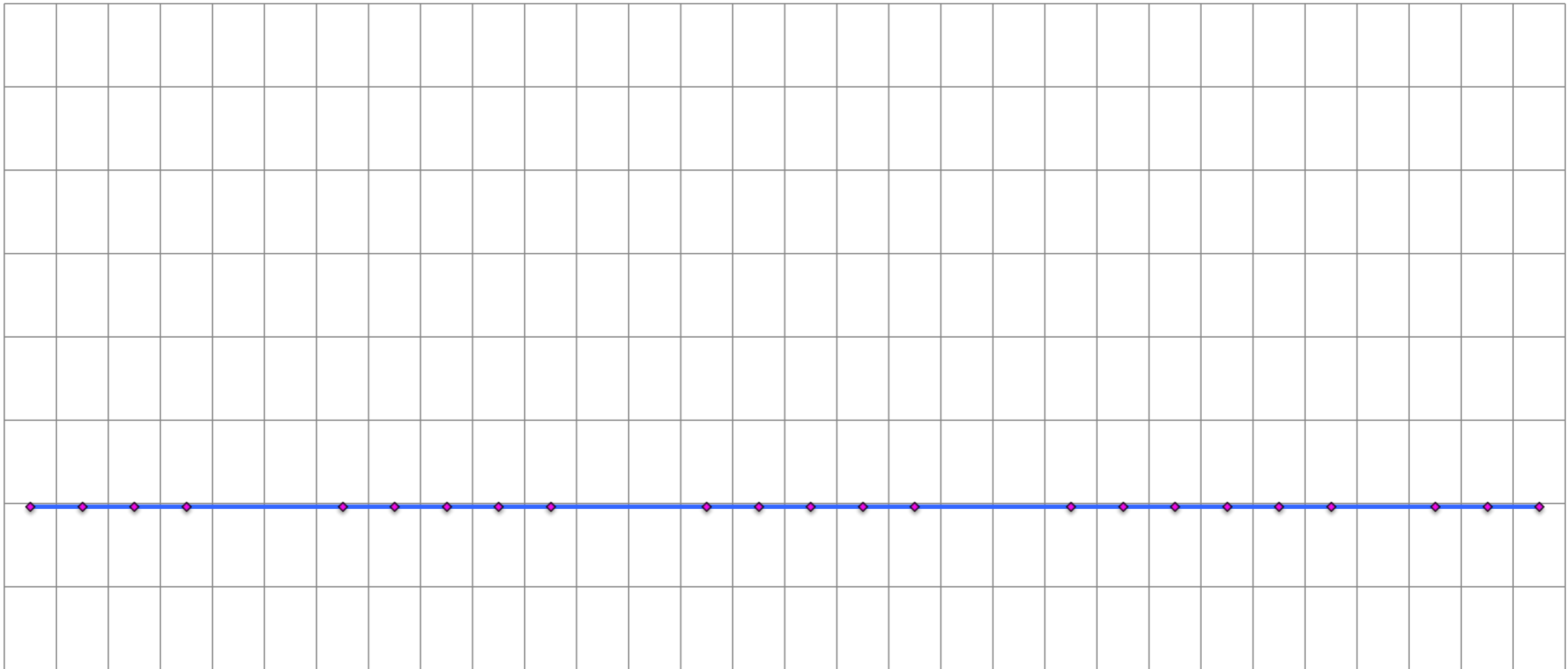
75.0

70.0

65.0

60.0

55.0



2020/9/1

2020/9/2

2020/9/3

2020/9/4

2020/9/5

2020/9/6

2020/9/7

2020/9/8

2020/9/9

2020/9/10

2020/9/11

2020/9/12

2020/9/13

2020/9/14

2020/9/15

2020/9/16

2020/9/17

2020/9/18

2020/9/19

2020/9/20

2020/9/21

2020/9/22

2020/9/23

2020/9/24

2020/9/25

2020/9/26

2020/9/27

2020/9/28

2020/9/29

2020/9/30

Ghosting (%)

(%)

1.00
0.80
0.60
0.40
0.20
0.00

