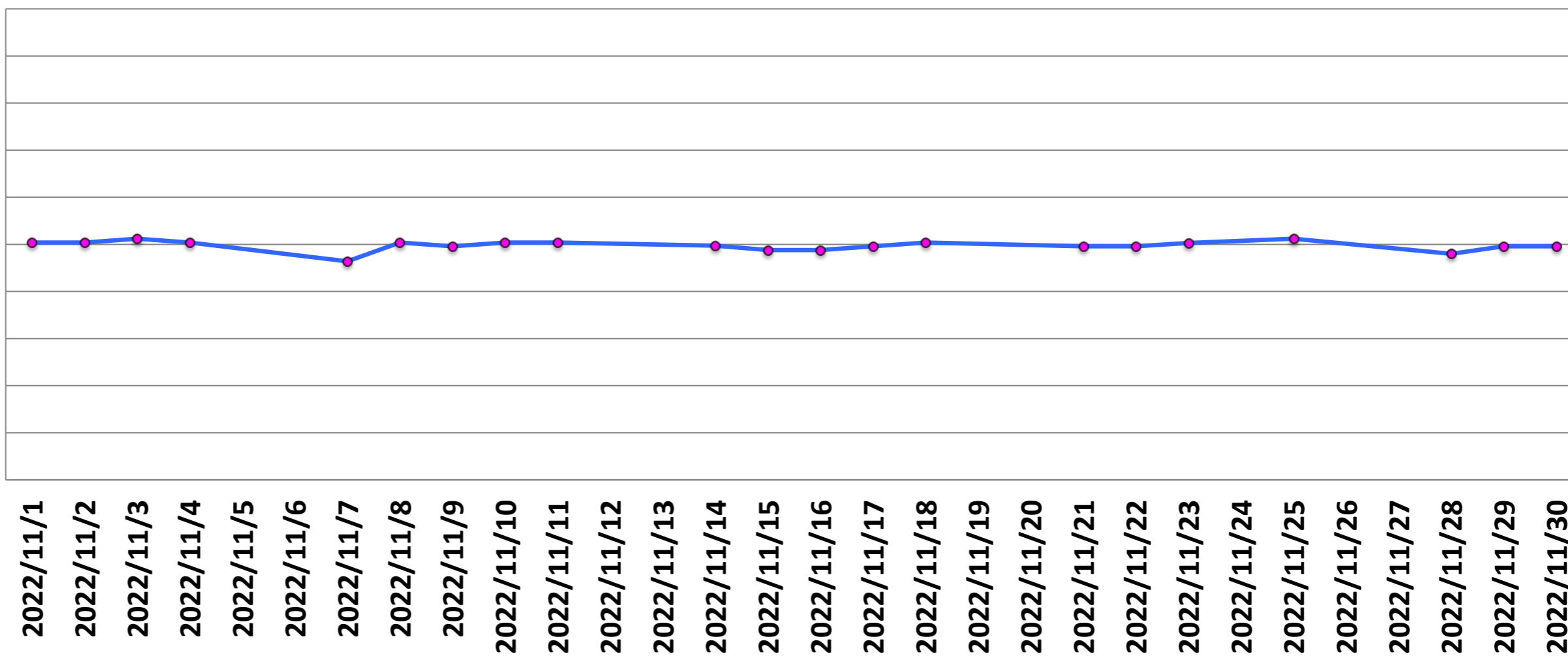


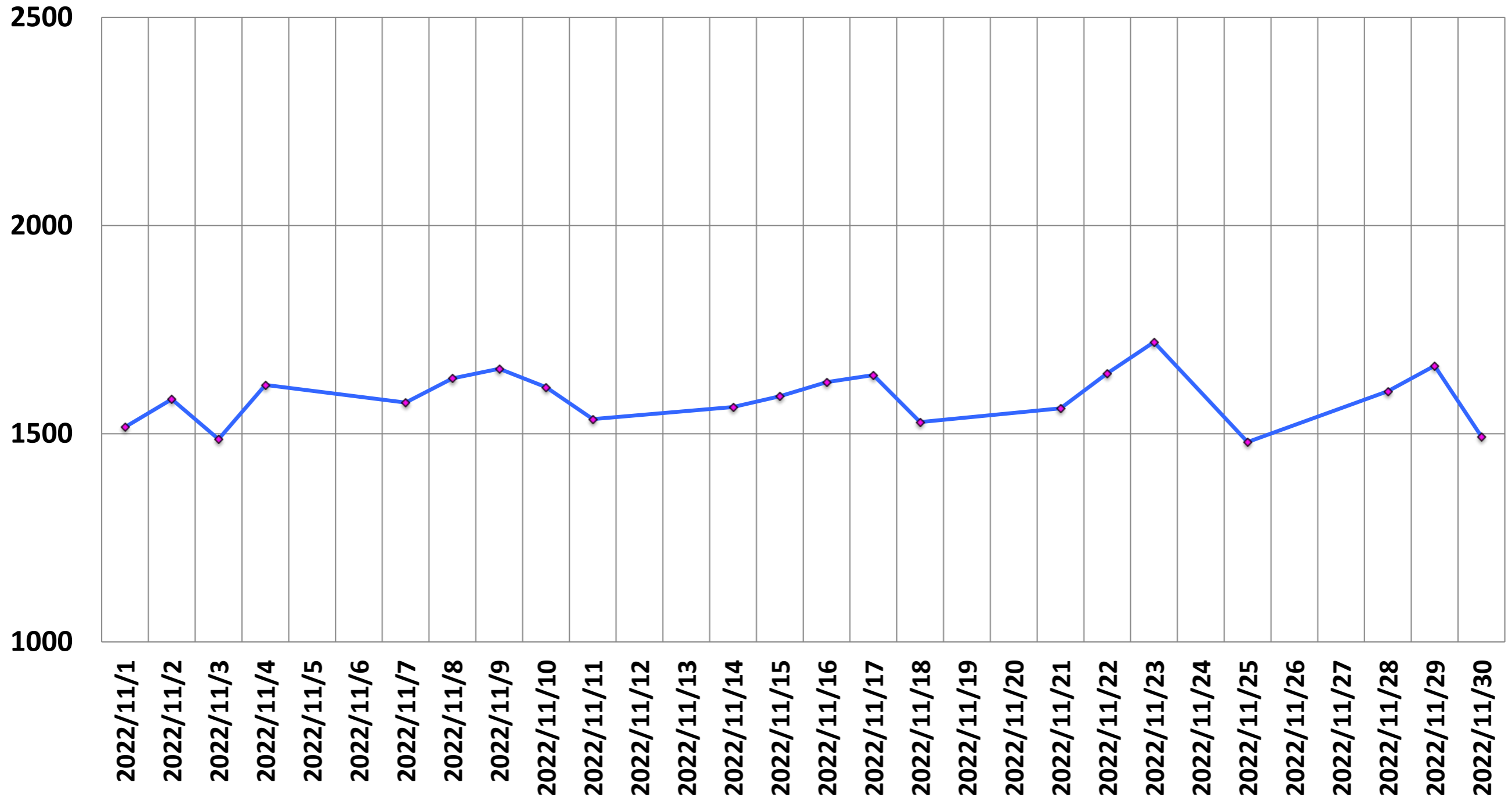
(MHz)

# Central Frequency (MHz)

123.2560  
123.2559  
123.2558  
123.2557  
123.2556  
123.2555  
123.2554  
123.2553  
123.2552  
123.2551  
123.2550

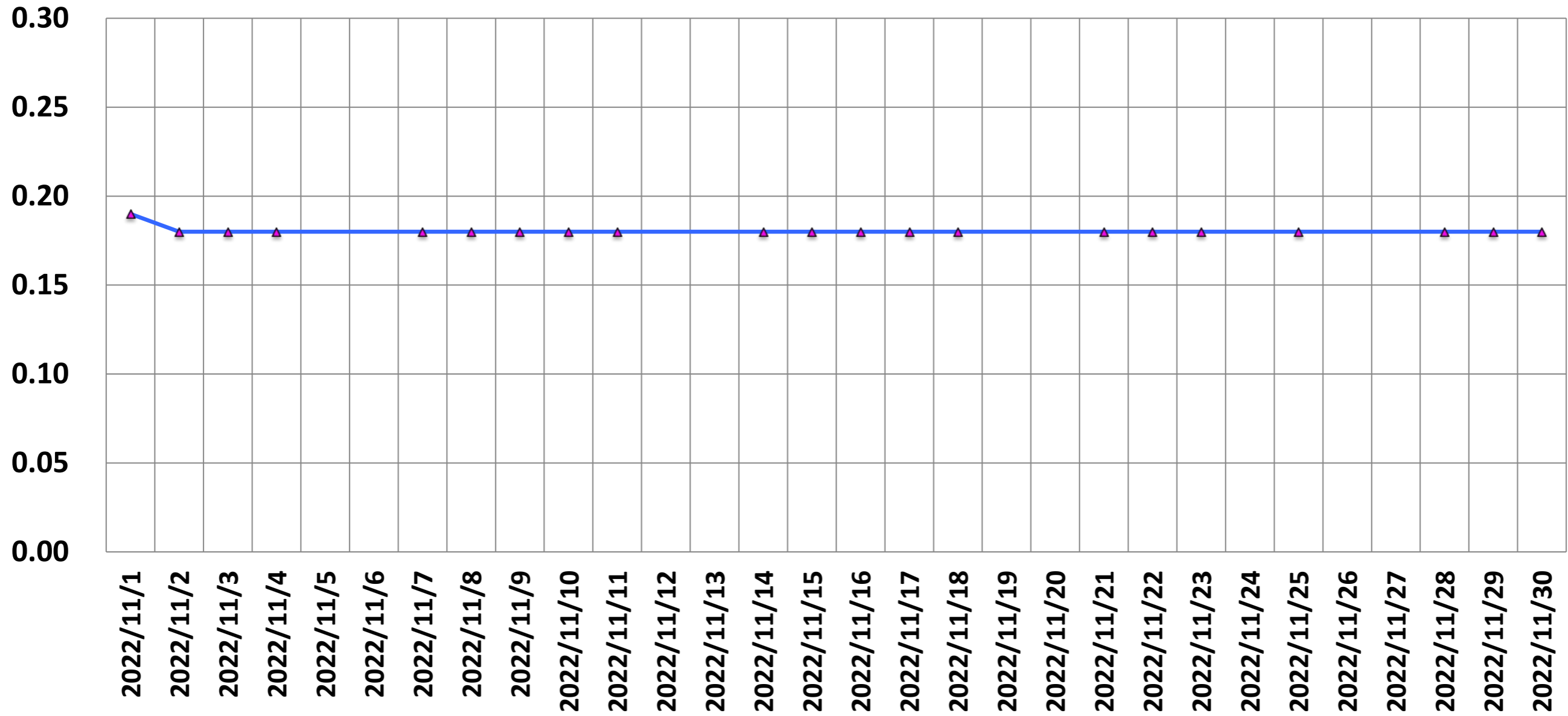


# SNR



# P-P/mean of single voxel (%)

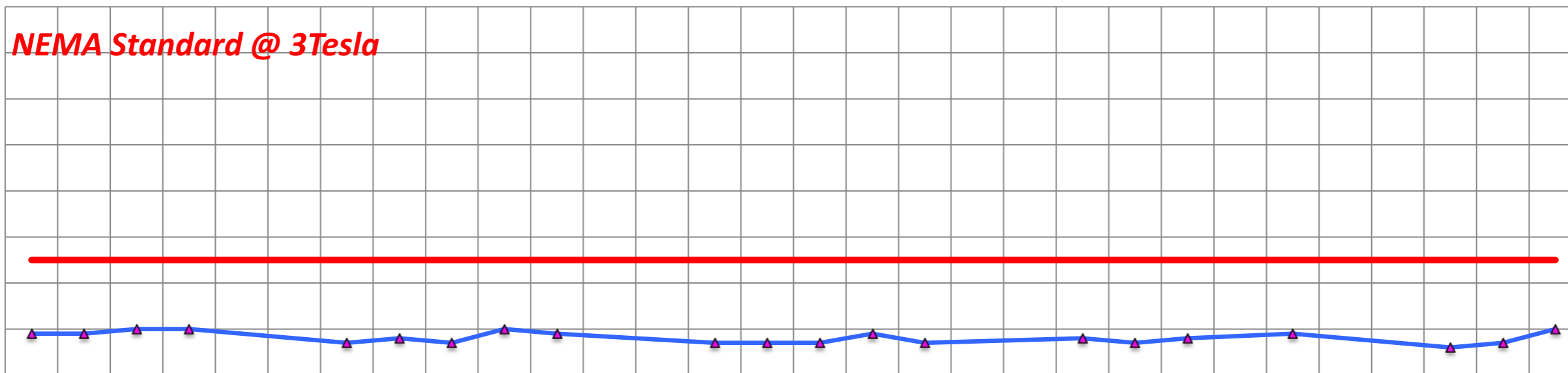
(%)



# p2p/mean (%)

(%)

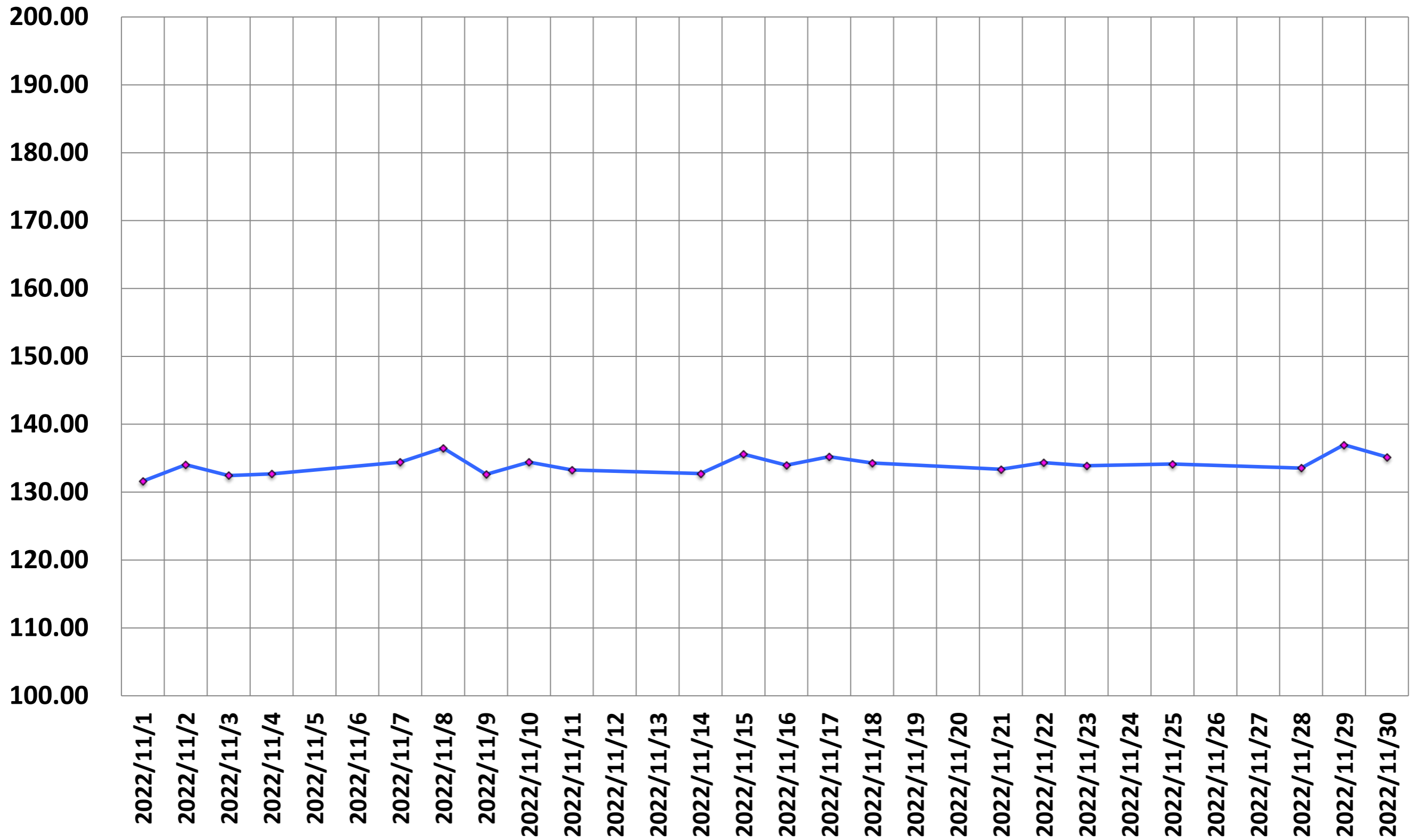
0.8  
0.7  
0.6  
0.5  
0.4  
0.3  
0.2  
0.1  
0



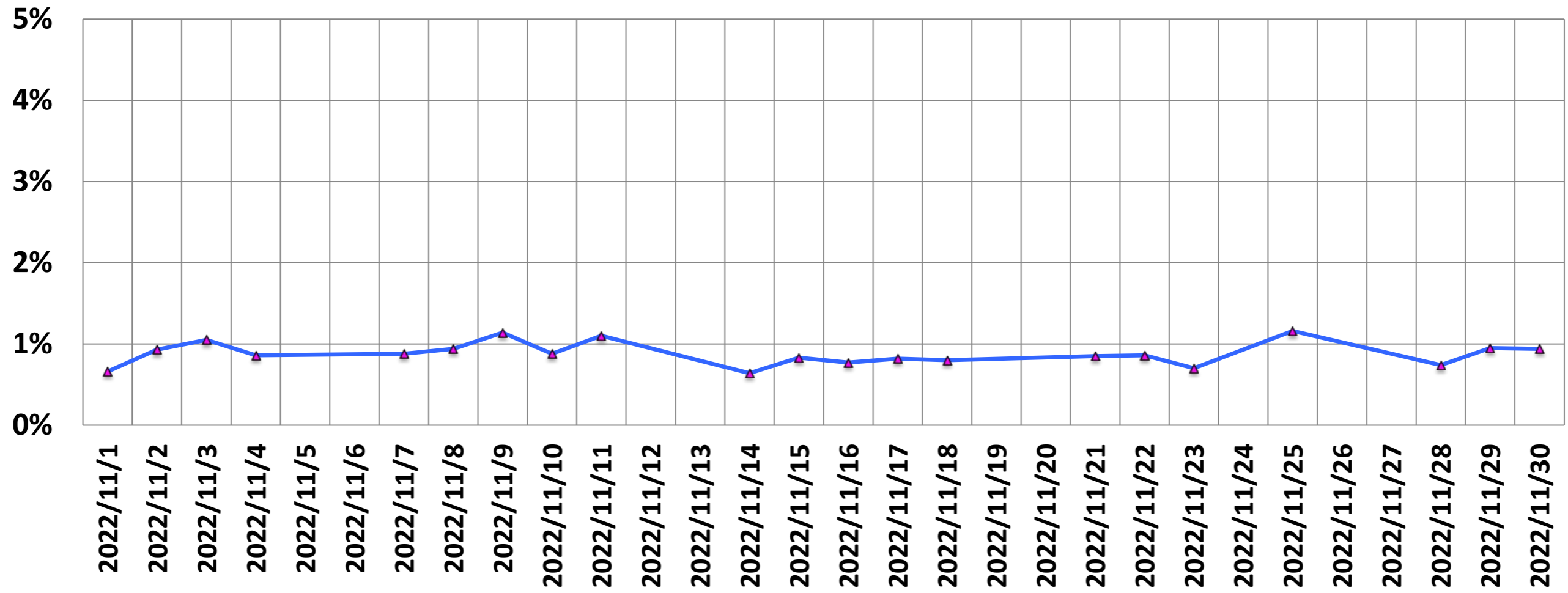
*NEMA Standard @ 3Tesla*

2022/11/1  
2022/11/2  
2022/11/3  
2022/11/4  
2022/11/5  
2022/11/6  
2022/11/7  
2022/11/8  
2022/11/9  
2022/11/10  
2022/11/11  
2022/11/12  
2022/11/13  
2022/11/14  
2022/11/15  
2022/11/16  
2022/11/17  
2022/11/18  
2022/11/19  
2022/11/20  
2022/11/21  
2022/11/22  
2022/11/23  
2022/11/24  
2022/11/25  
2022/11/26  
2022/11/27  
2022/11/28  
2022/11/29  
2022/11/30

# SGR



# Drift Rate



# He Level (%)

He (%)

95.0

90.0

85.0

80.0

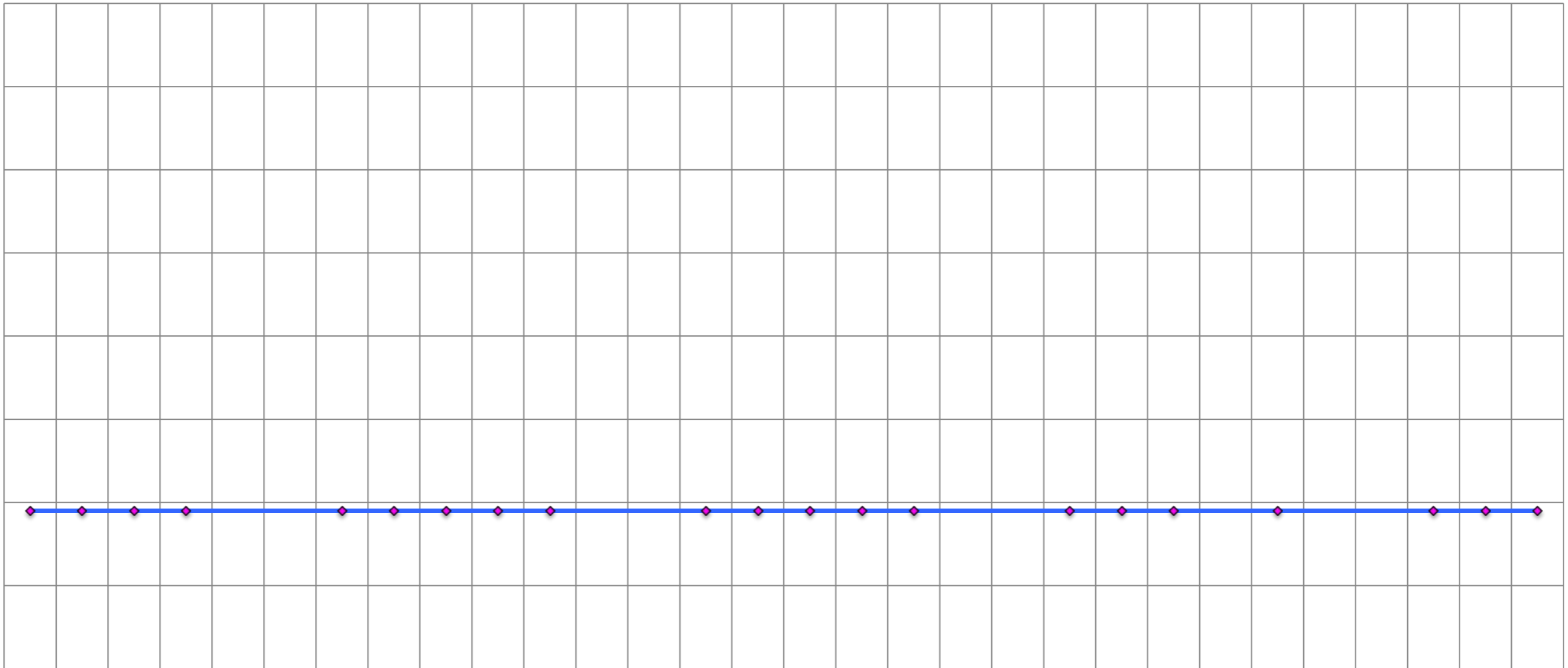
75.0

70.0

65.0

60.0

55.0



2022/11/1

2022/11/2

2022/11/3

2022/11/4

2022/11/5

2022/11/6

2022/11/7

2022/11/8

2022/11/9

2022/11/10

2022/11/11

2022/11/12

2022/11/13

2022/11/14

2022/11/15

2022/11/16

2022/11/17

2022/11/18

2022/11/19

2022/11/20

2022/11/21

2022/11/22

2022/11/23

2022/11/24

2022/11/25

2022/11/26

2022/11/27

2022/11/28

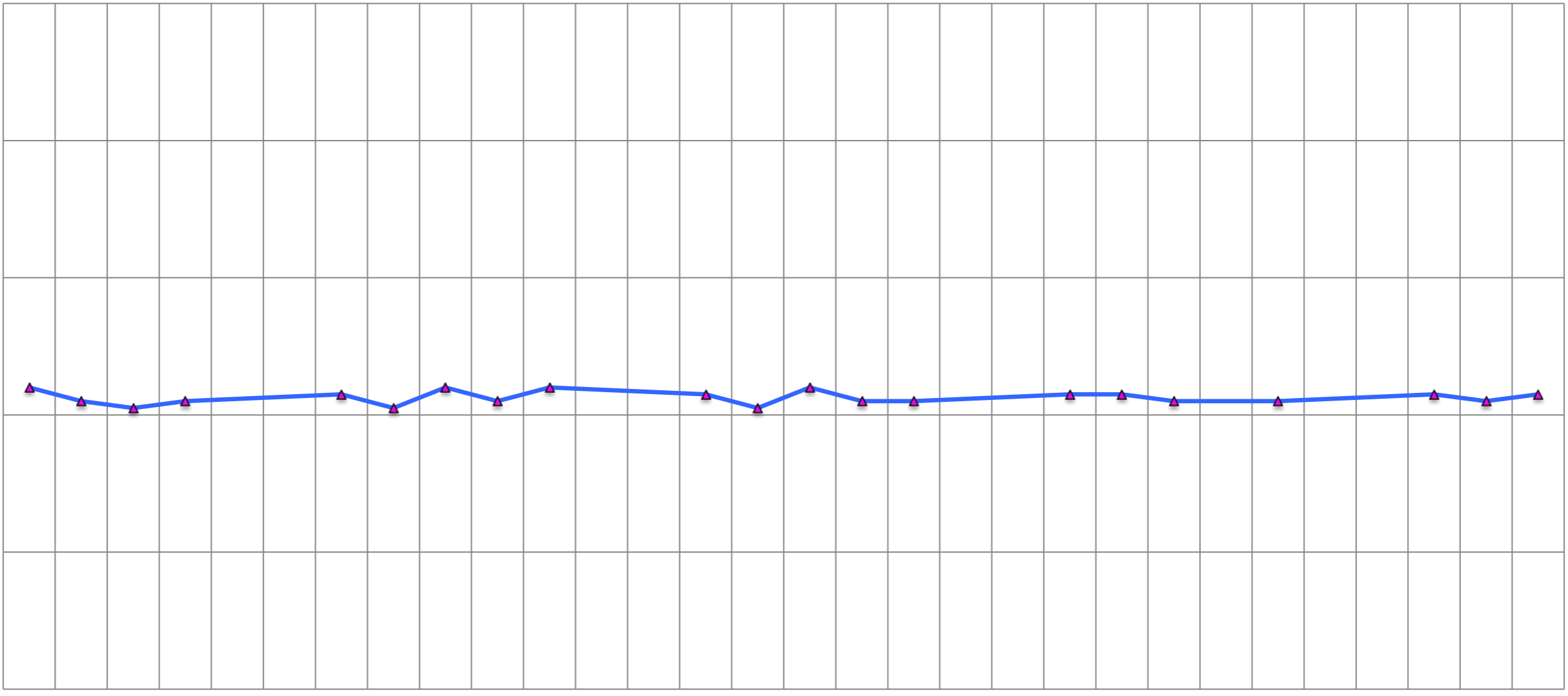
2022/11/29

2022/11/30

# Ghosting (%)

(%)

1.00  
0.80  
0.60  
0.40  
0.20  
0.00



2022/11/1  
2022/11/2  
2022/11/3  
2022/11/4  
2022/11/5  
2022/11/6  
2022/11/7  
2022/11/8  
2022/11/9  
2022/11/10  
2022/11/11  
2022/11/12  
2022/11/13  
2022/11/14  
2022/11/15  
2022/11/16  
2022/11/17  
2022/11/18  
2022/11/19  
2022/11/20  
2022/11/21  
2022/11/22  
2022/11/23  
2022/11/24  
2022/11/25  
2022/11/26  
2022/11/27  
2022/11/28  
2022/11/29  
2022/11/30