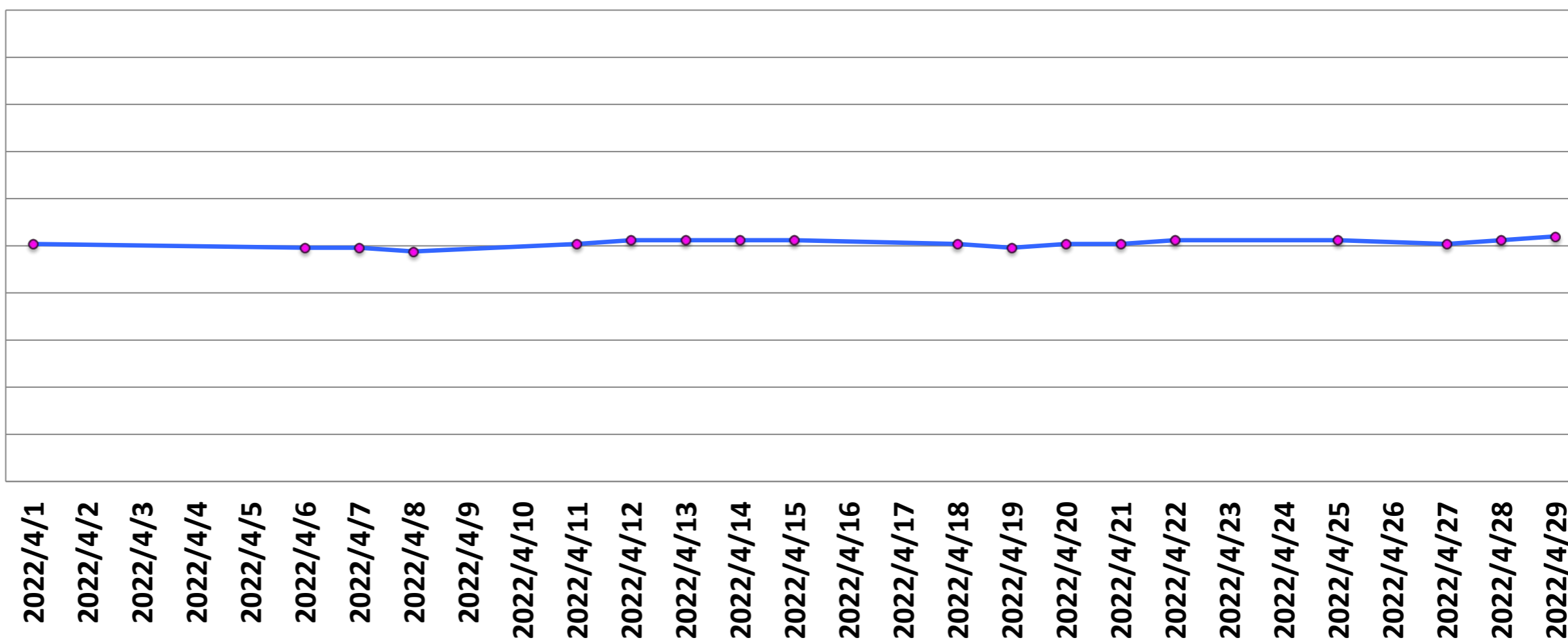


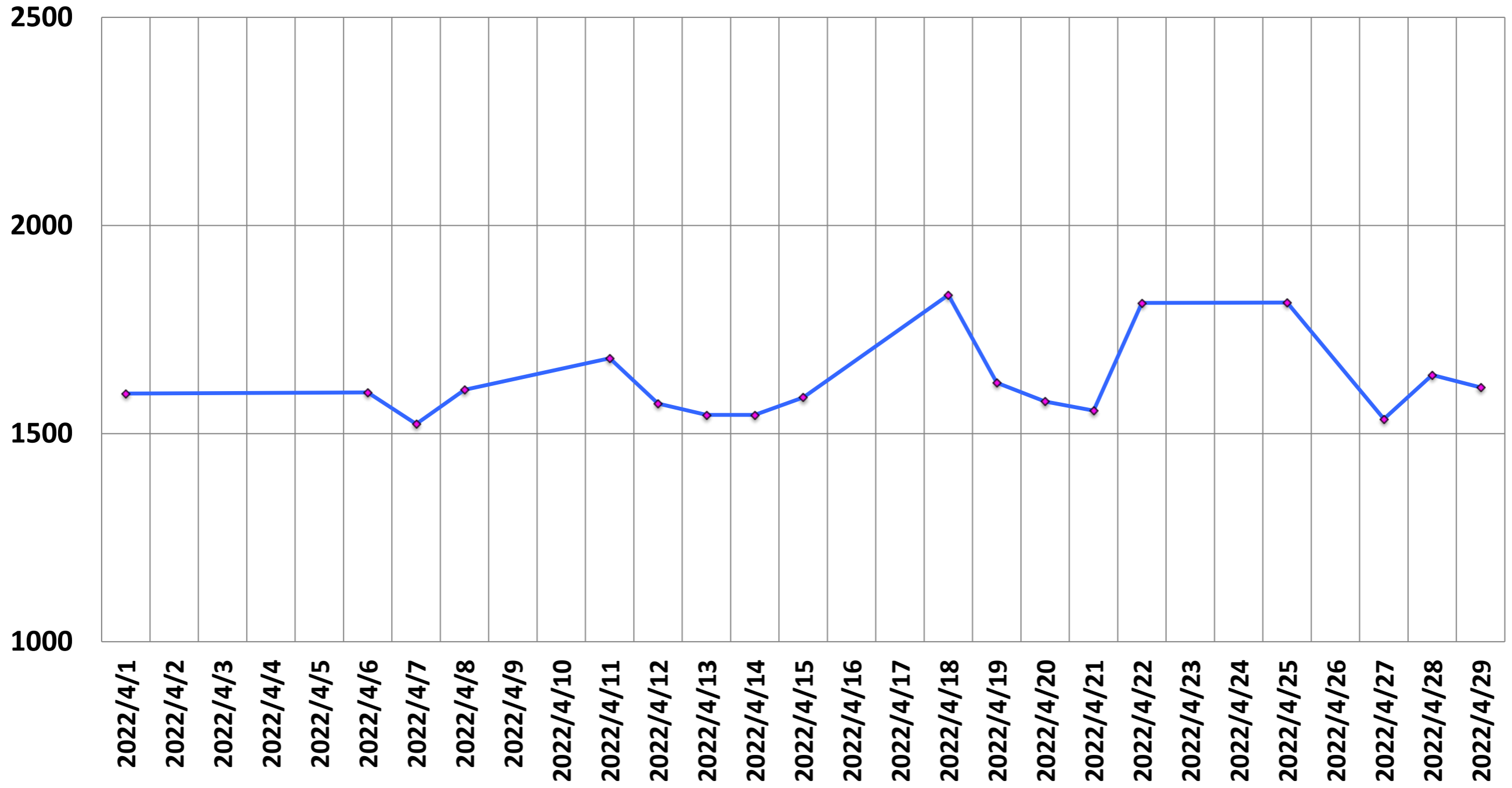
(MHz)

Central Frequency (MHz)

123.2560
123.2559
123.2558
123.2557
123.2556
123.2555
123.2554
123.2553
123.2552
123.2551
123.2550



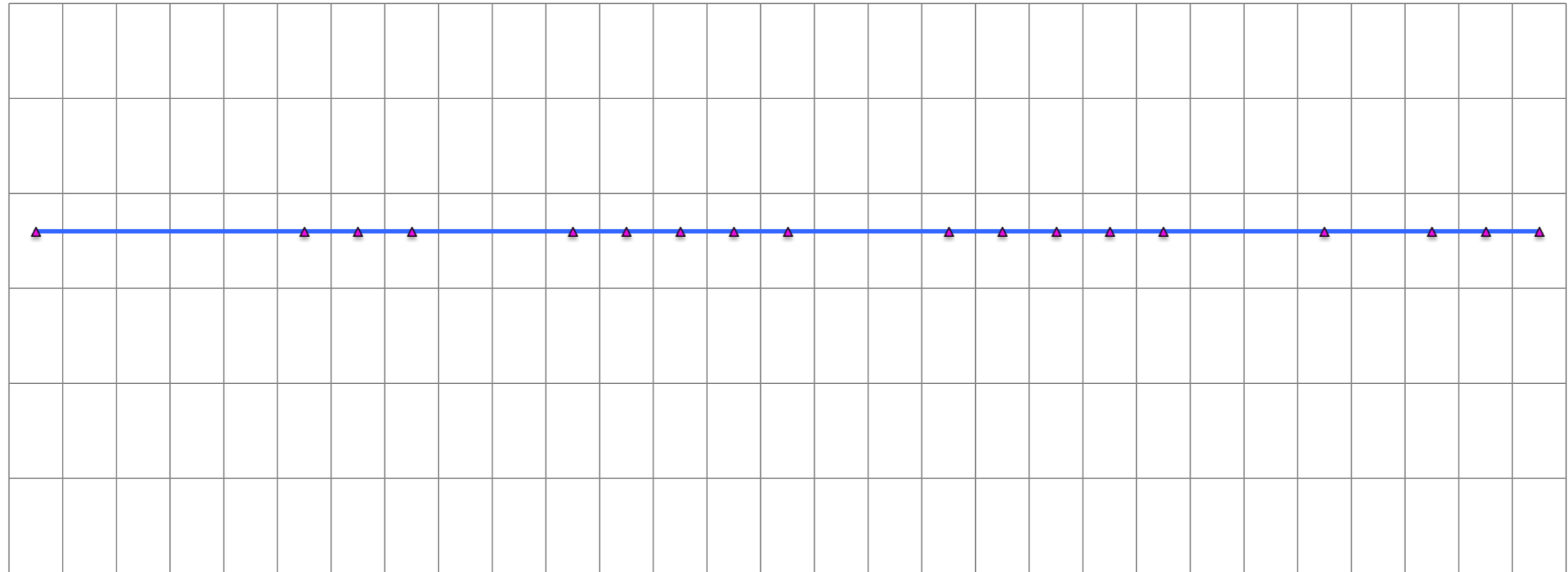
SNR



P-P/mean of single voxel (%)

(%)

0.30
0.25
0.20
0.15
0.10
0.05
0.00

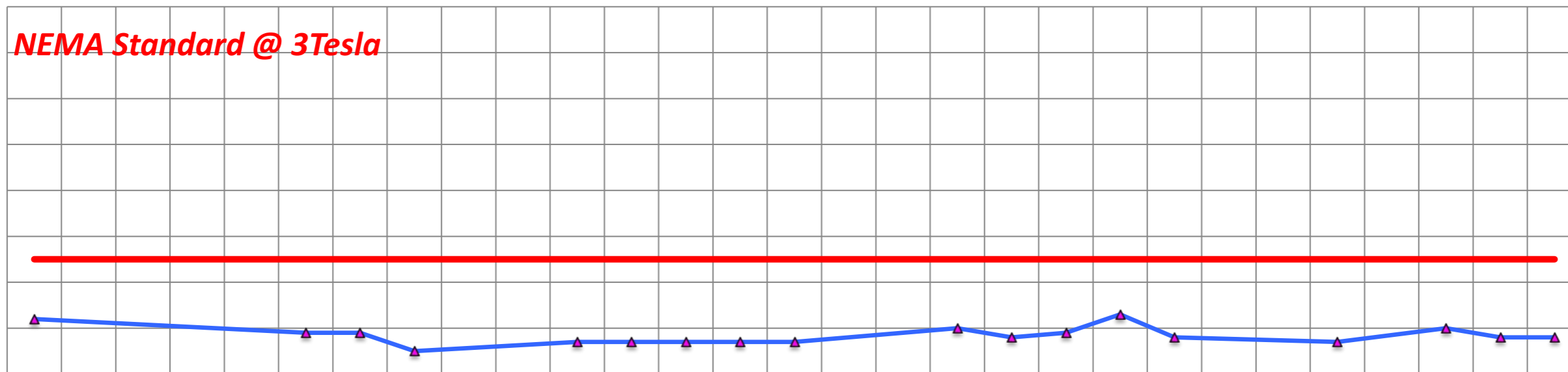


2022/4/1
2022/4/2
2022/4/3
2022/4/4
2022/4/5
2022/4/6
2022/4/7
2022/4/8
2022/4/9
2022/4/10
2022/4/11
2022/4/12
2022/4/13
2022/4/14
2022/4/15
2022/4/16
2022/4/17
2022/4/18
2022/4/19
2022/4/20
2022/4/21
2022/4/22
2022/4/23
2022/4/24
2022/4/25
2022/4/26
2022/4/27
2022/4/28
2022/4/29

p2p/mean (%)

(%)

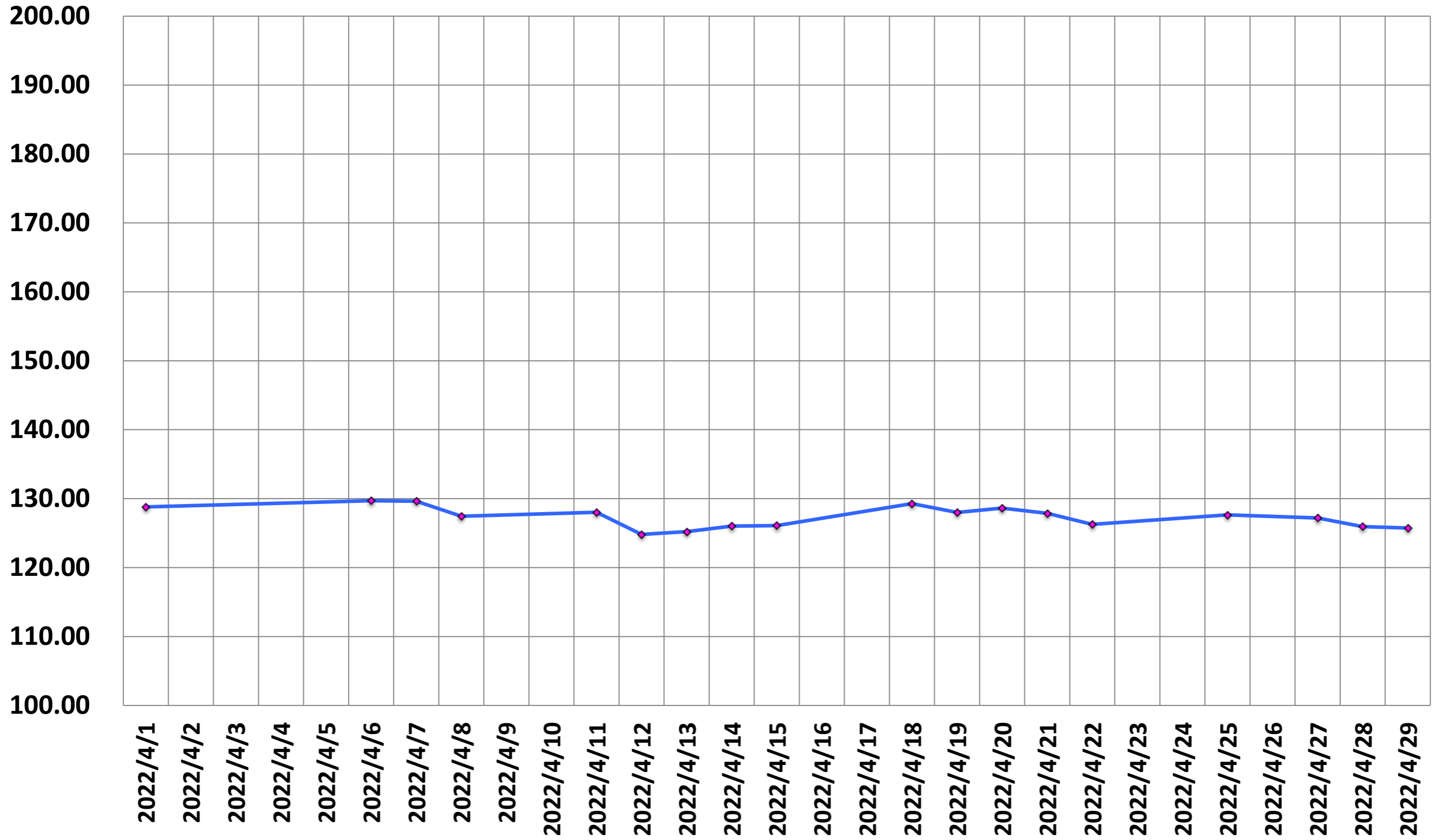
0.8
0.7
0.6
0.5
0.4
0.3
0.2
0.1
0



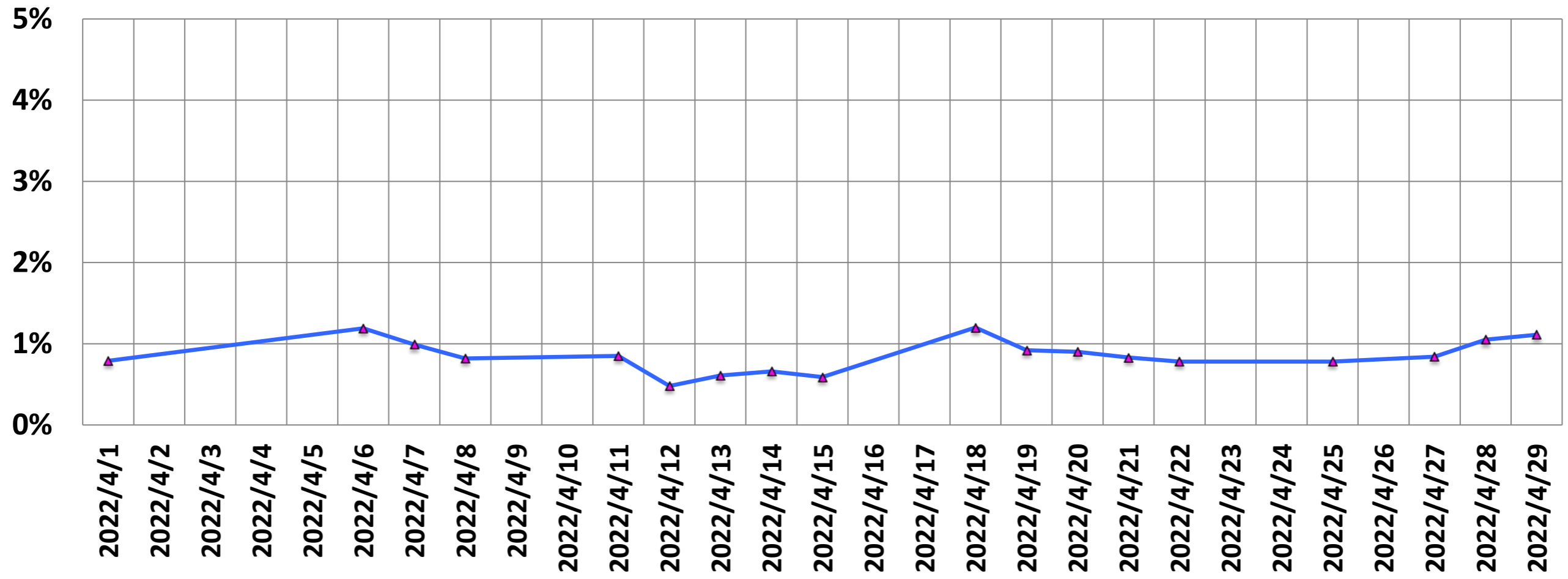
NEMA Standard @ 3Tesla

2022/4/1
2022/4/2
2022/4/3
2022/4/4
2022/4/5
2022/4/6
2022/4/7
2022/4/8
2022/4/9
2022/4/10
2022/4/11
2022/4/12
2022/4/13
2022/4/14
2022/4/15
2022/4/16
2022/4/17
2022/4/18
2022/4/19
2022/4/20
2022/4/21
2022/4/22
2022/4/23
2022/4/24
2022/4/25
2022/4/26
2022/4/27
2022/4/28
2022/4/29

SGR



Drift Rate



He Level (%)

He (%)

95.0

90.0

85.0

80.0

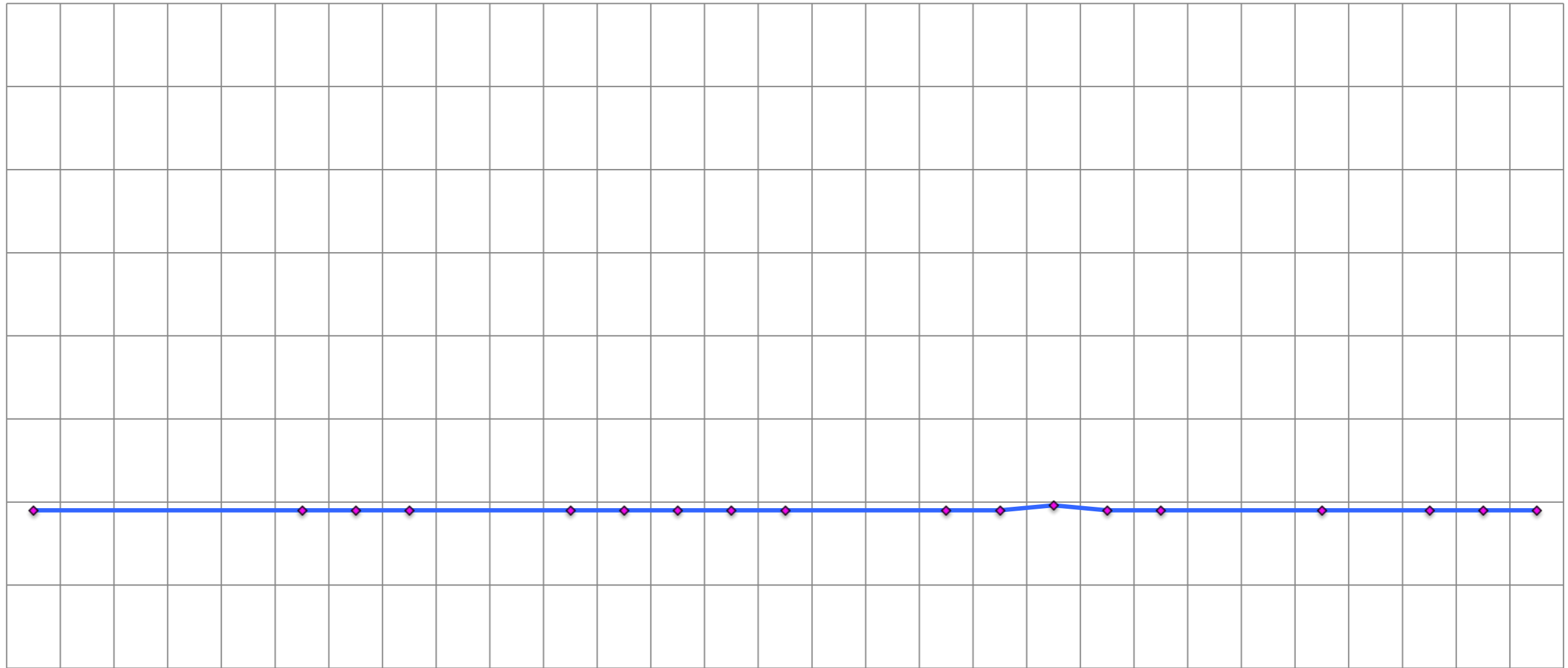
75.0

70.0

65.0

60.0

55.0



2022/4/1

2022/4/2

2022/4/3

2022/4/4

2022/4/5

2022/4/6

2022/4/7

2022/4/8

2022/4/9

2022/4/10

2022/4/11

2022/4/12

2022/4/13

2022/4/14

2022/4/15

2022/4/16

2022/4/17

2022/4/18

2022/4/19

2022/4/20

2022/4/21

2022/4/22

2022/4/23

2022/4/24

2022/4/25

2022/4/26

2022/4/27

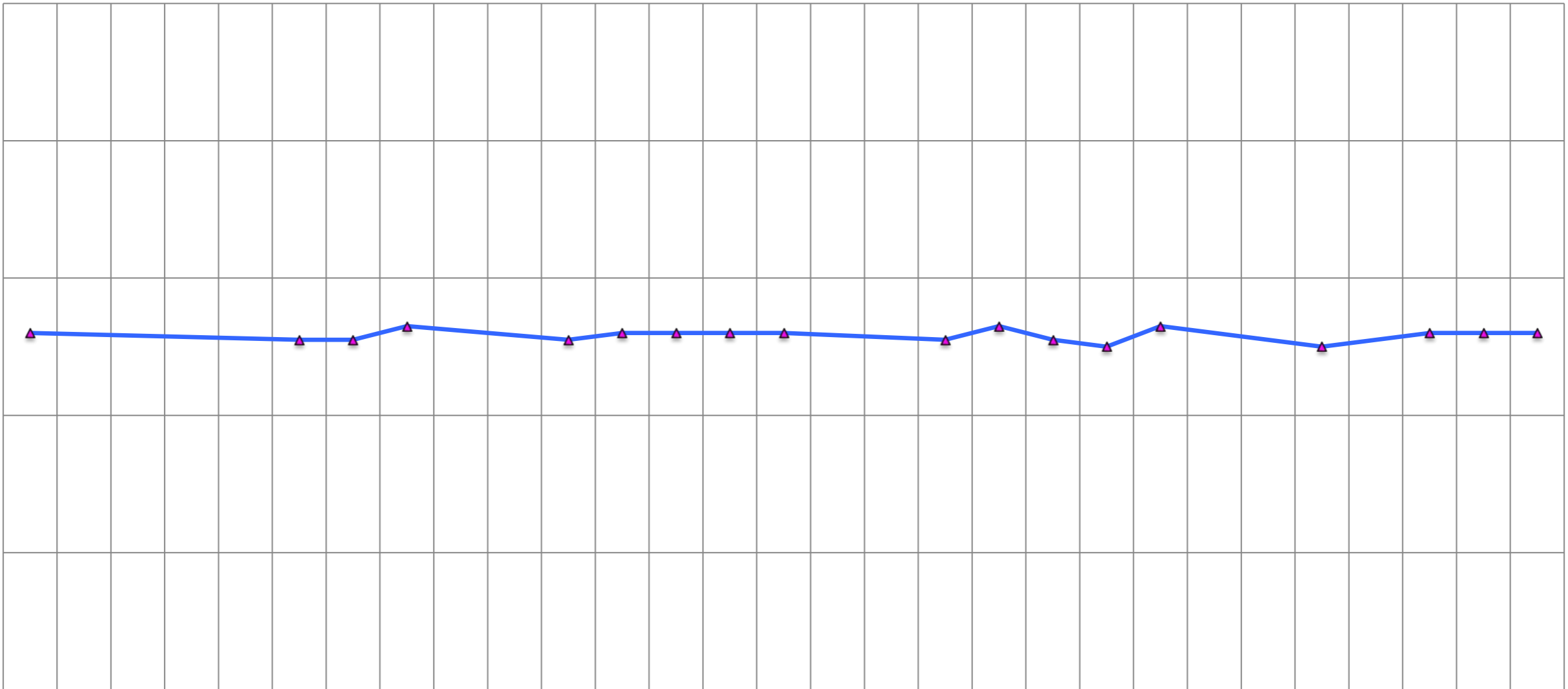
2022/4/28

2022/4/29

Ghosting (%)

(%)

1.00
0.80
0.60
0.40
0.20
0.00



2022/4/1
2022/4/2
2022/4/3
2022/4/4
2022/4/5
2022/4/6
2022/4/7
2022/4/8
2022/4/9
2022/4/10
2022/4/11
2022/4/12
2022/4/13
2022/4/14
2022/4/15
2022/4/16
2022/4/17
2022/4/18
2022/4/19
2022/4/20
2022/4/21
2022/4/22
2022/4/23
2022/4/24
2022/4/25
2022/4/26
2022/4/27
2022/4/28
2022/4/29