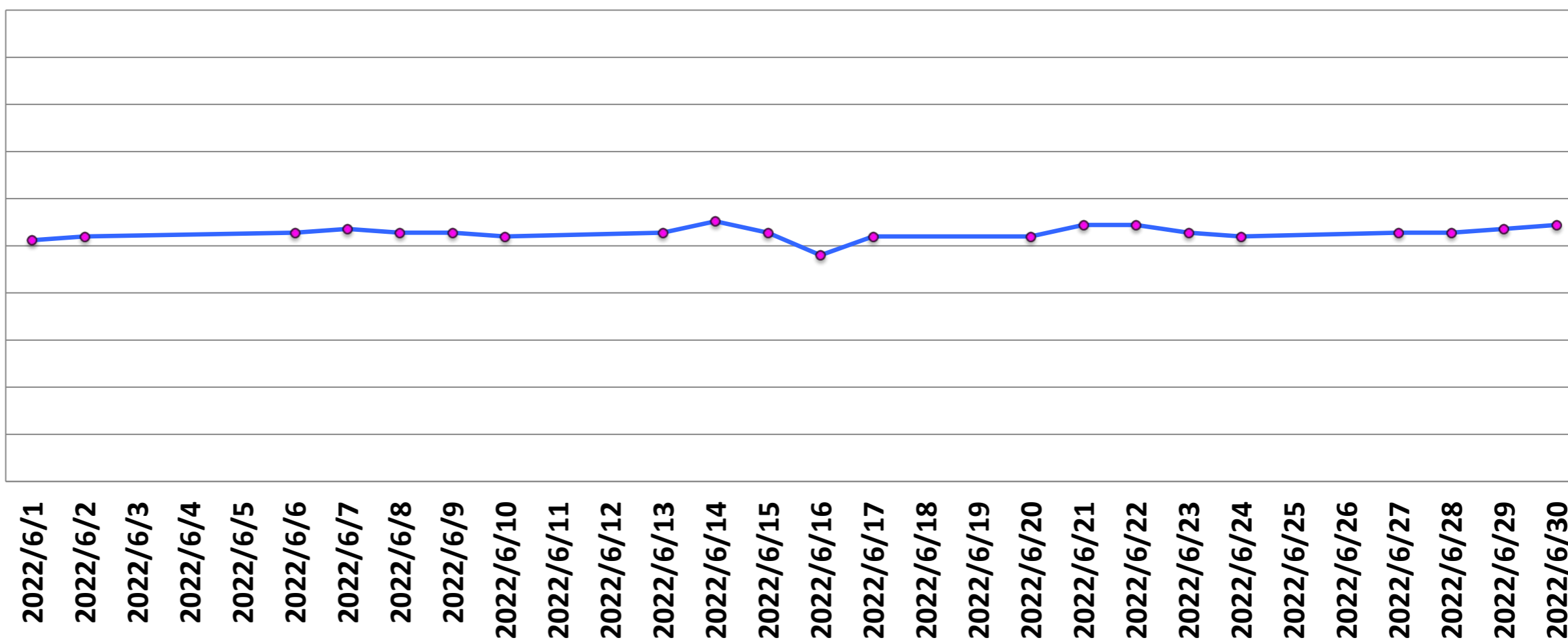


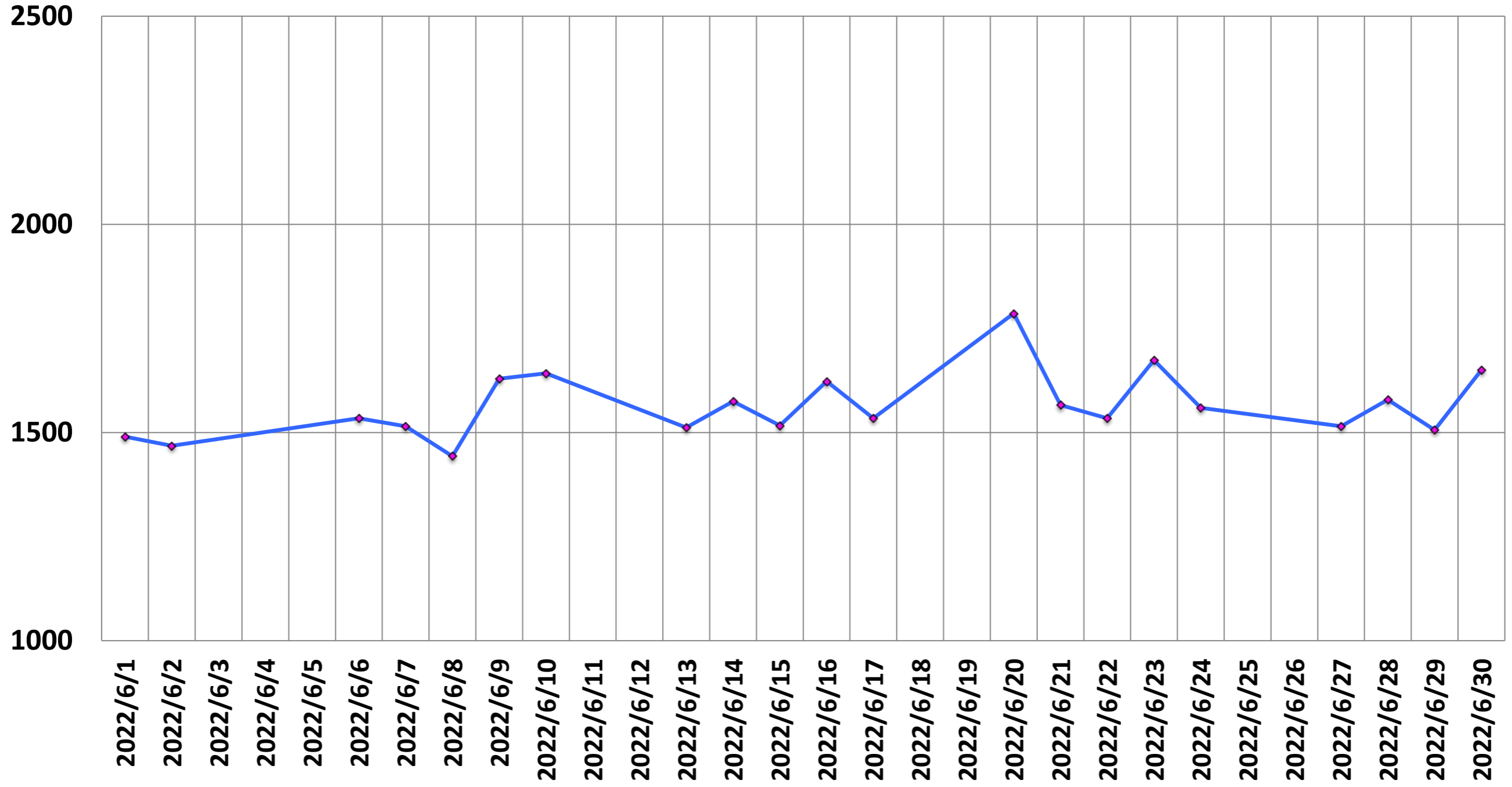
(MHz)

Central Frequency (MHz)

123.2560
123.2559
123.2558
123.2557
123.2556
123.2555
123.2554
123.2553
123.2552
123.2551
123.2550



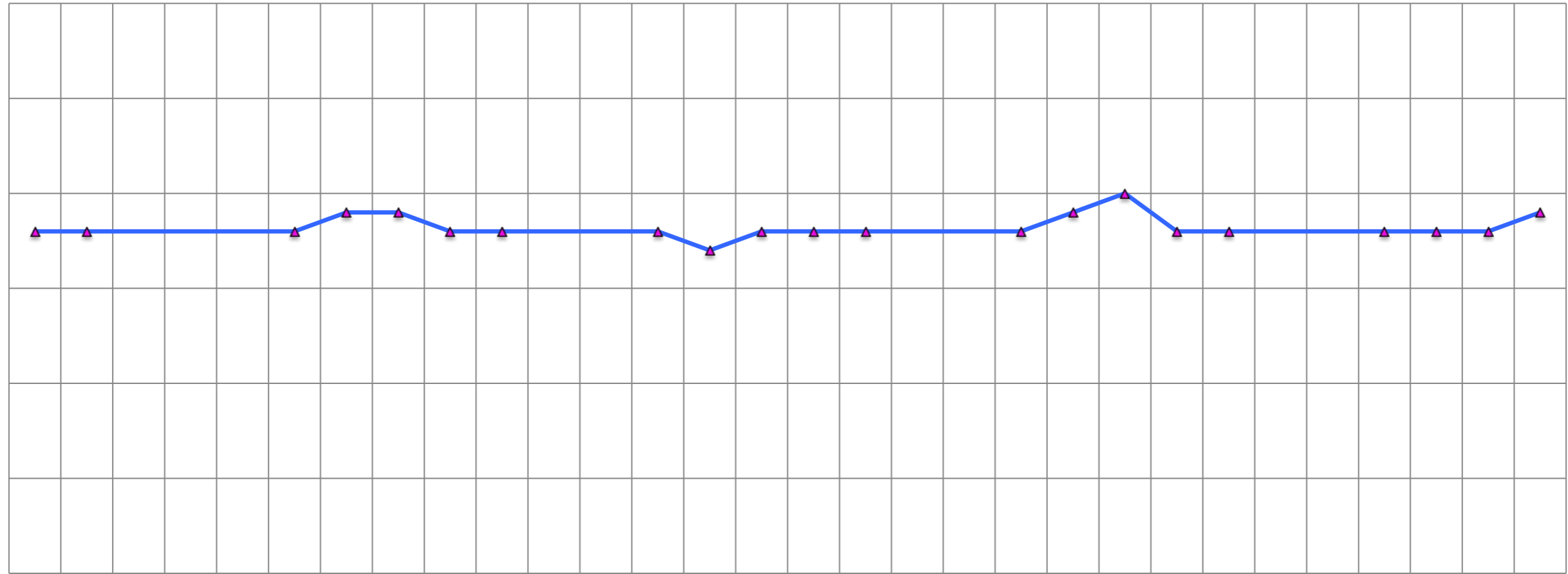
SNR



P-P/mean of single voxel (%)

(%)

0.30
0.25
0.20
0.15
0.10
0.05
0.00

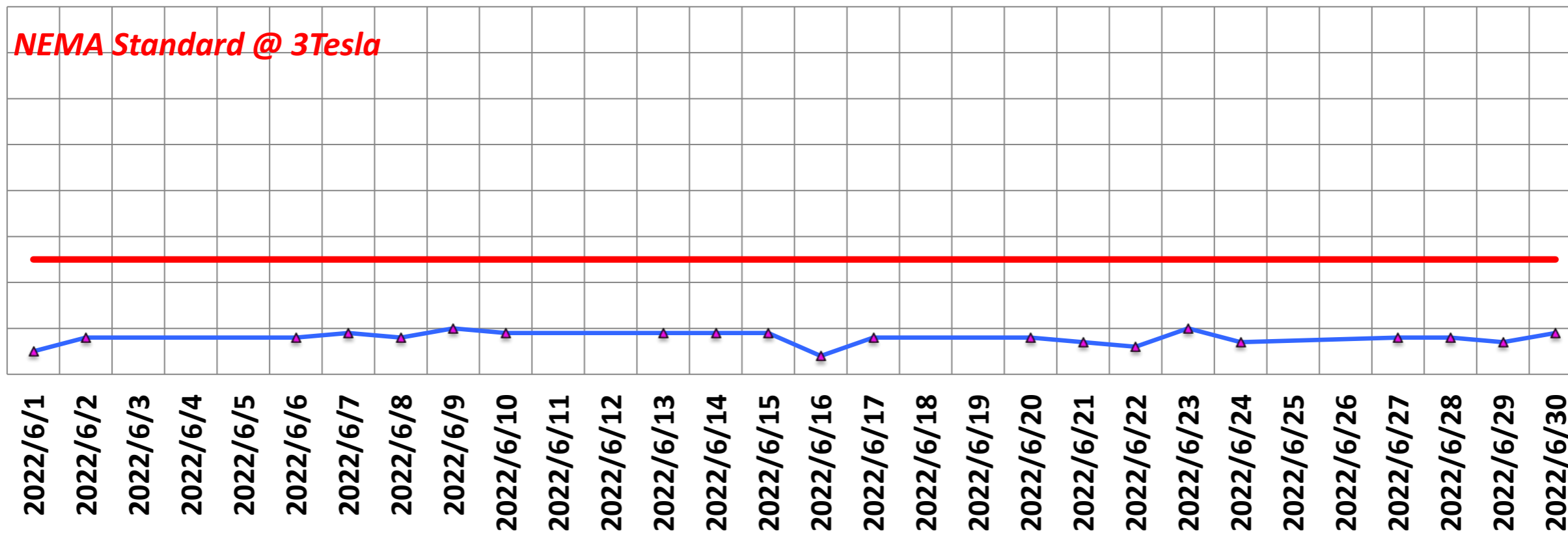


2022/6/1
2022/6/2
2022/6/3
2022/6/4
2022/6/5
2022/6/6
2022/6/7
2022/6/8
2022/6/9
2022/6/10
2022/6/11
2022/6/12
2022/6/13
2022/6/14
2022/6/15
2022/6/16
2022/6/17
2022/6/18
2022/6/19
2022/6/20
2022/6/21
2022/6/22
2022/6/23
2022/6/24
2022/6/25
2022/6/26
2022/6/27
2022/6/28
2022/6/29
2022/6/30

p2p/mean (%)

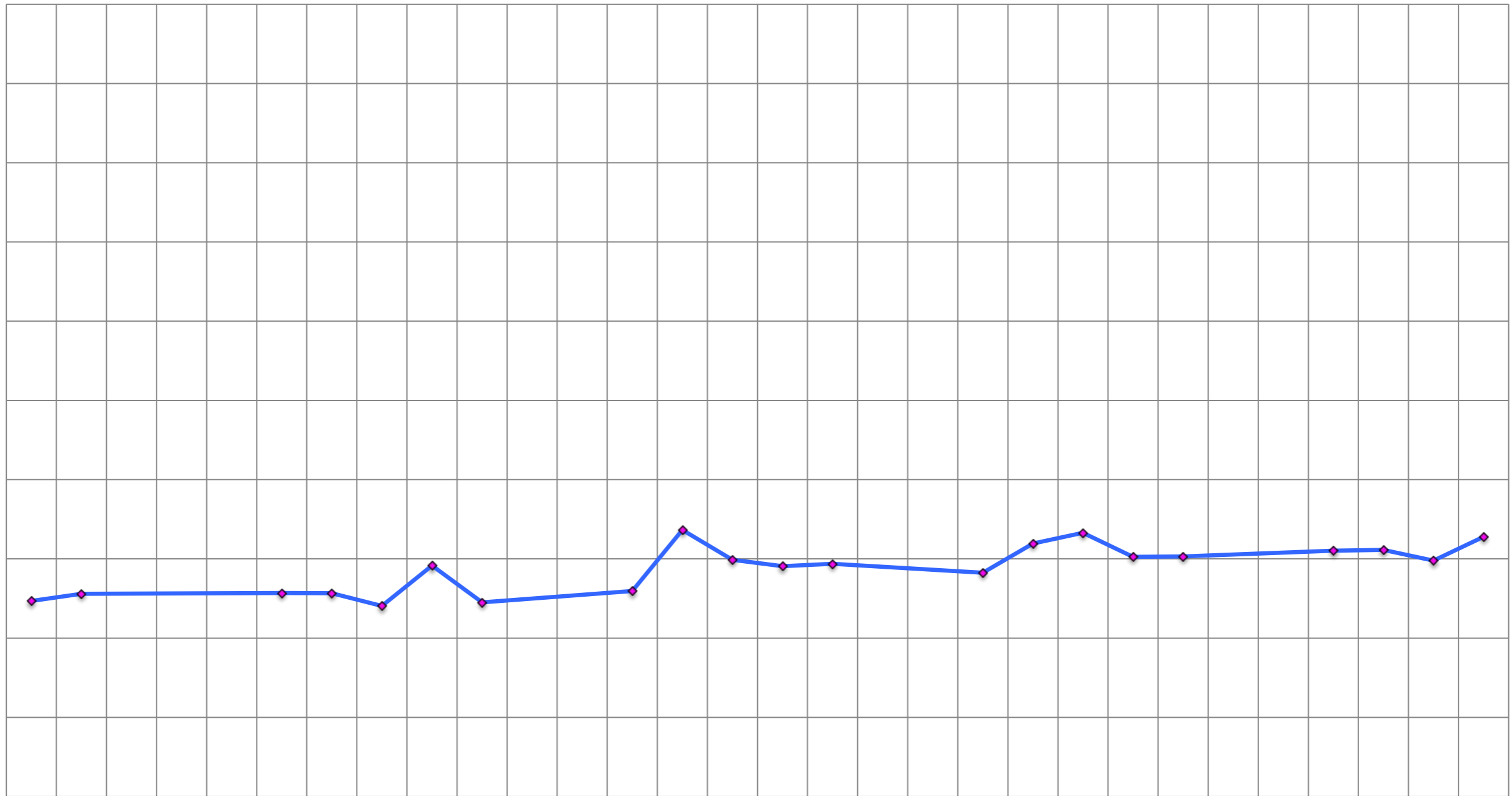
(%)

0.8
0.7
0.6
0.5
0.4
0.3
0.2
0.1
0



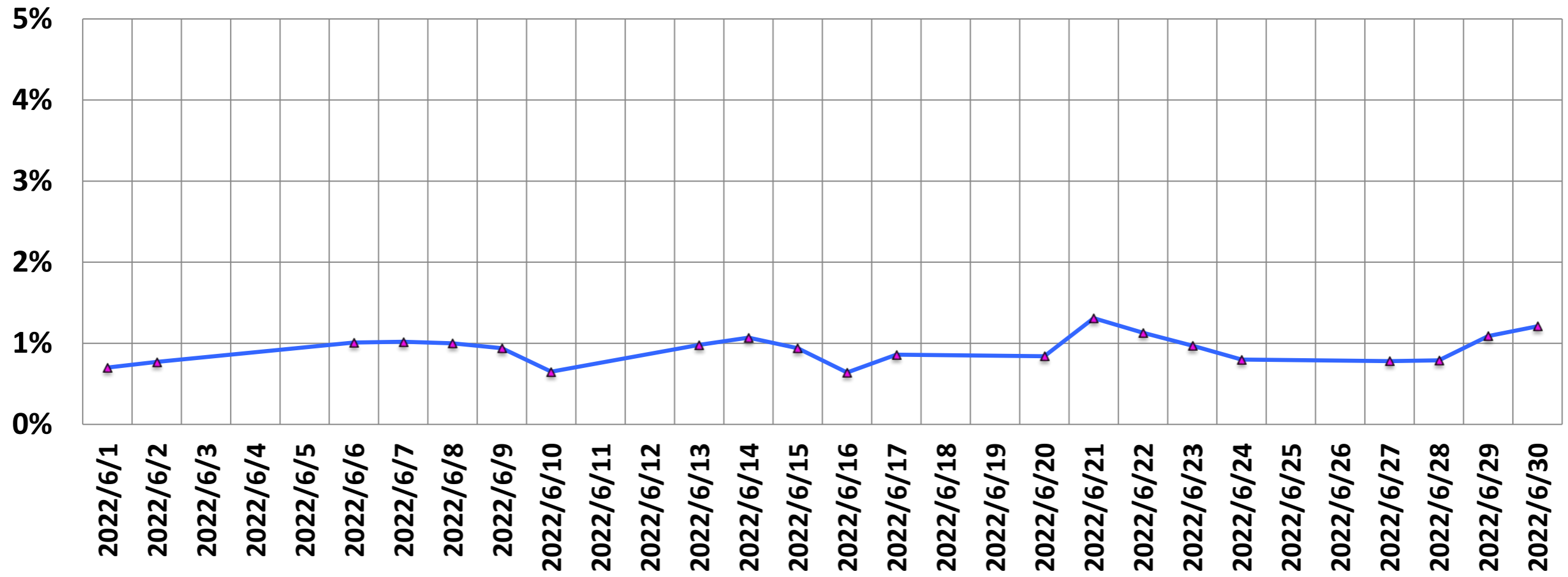
SGR

200.00
190.00
180.00
170.00
160.00
150.00
140.00
130.00
120.00
110.00
100.00



2022/6/1
2022/6/2
2022/6/3
2022/6/4
2022/6/5
2022/6/6
2022/6/7
2022/6/8
2022/6/9
2022/6/10
2022/6/11
2022/6/12
2022/6/13
2022/6/14
2022/6/15
2022/6/16
2022/6/17
2022/6/18
2022/6/19
2022/6/20
2022/6/21
2022/6/22
2022/6/23
2022/6/24
2022/6/25
2022/6/26
2022/6/27
2022/6/28
2022/6/29
2022/6/30

Drift Rate



He Level (%)

He (%)

95.0

90.0

85.0

80.0

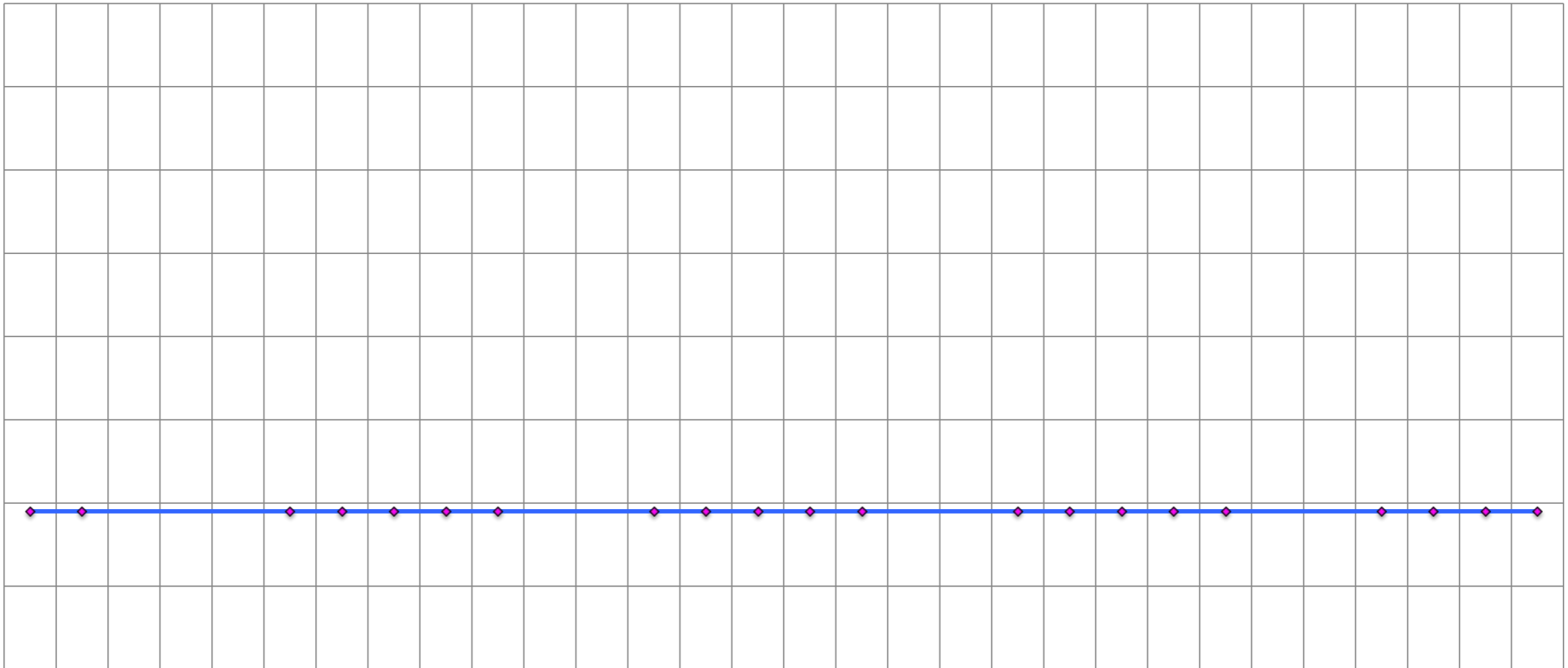
75.0

70.0

65.0

60.0

55.0



2022/6/1

2022/6/2

2022/6/3

2022/6/4

2022/6/5

2022/6/6

2022/6/7

2022/6/8

2022/6/9

2022/6/10

2022/6/11

2022/6/12

2022/6/13

2022/6/14

2022/6/15

2022/6/16

2022/6/17

2022/6/18

2022/6/19

2022/6/20

2022/6/21

2022/6/22

2022/6/23

2022/6/24

2022/6/25

2022/6/26

2022/6/27

2022/6/28

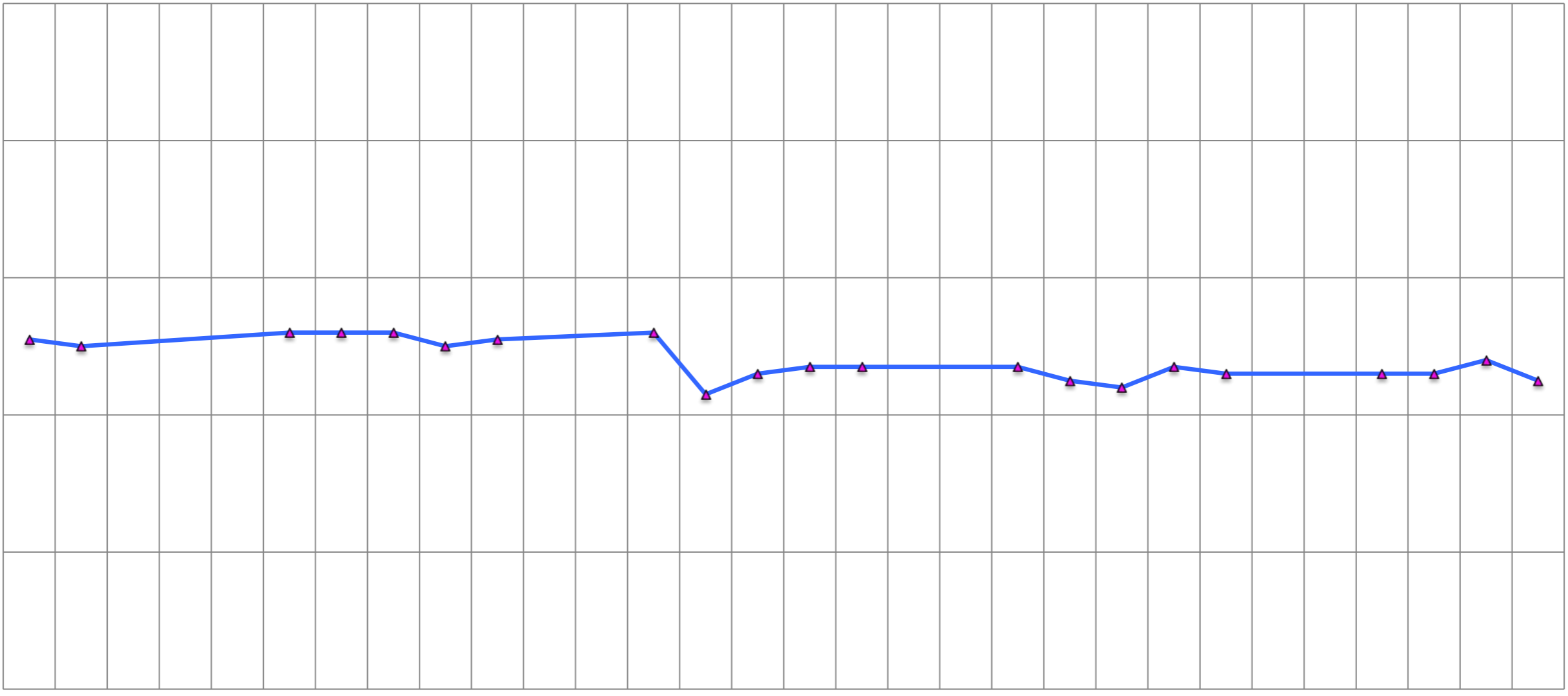
2022/6/29

2022/6/30

Ghosting (%)

(%)

1.00
0.80
0.60
0.40
0.20
0.00



2022/6/1
2022/6/2
2022/6/3
2022/6/4
2022/6/5
2022/6/6
2022/6/7
2022/6/8
2022/6/9
2022/6/10
2022/6/11
2022/6/12
2022/6/13
2022/6/14
2022/6/15
2022/6/16
2022/6/17
2022/6/18
2022/6/19
2022/6/20
2022/6/21
2022/6/22
2022/6/23
2022/6/24
2022/6/25
2022/6/26
2022/6/27
2022/6/28
2022/6/29
2022/6/30