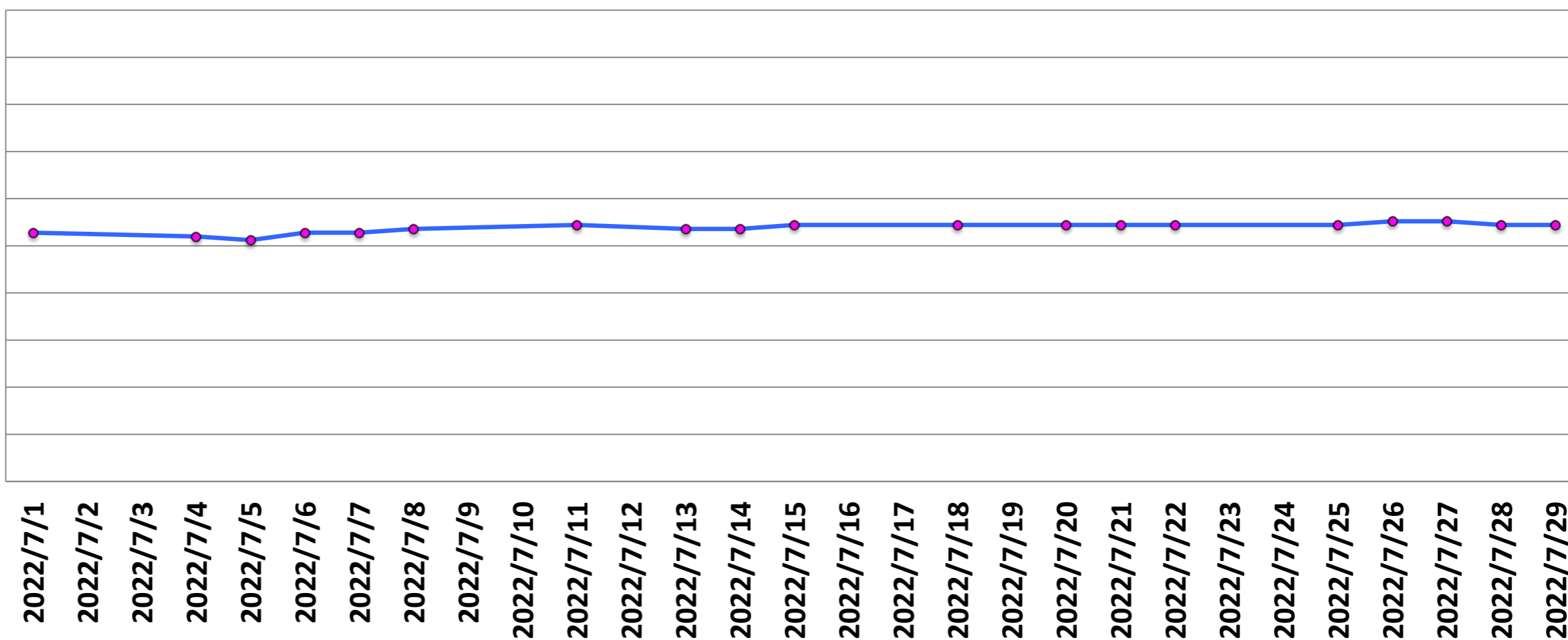


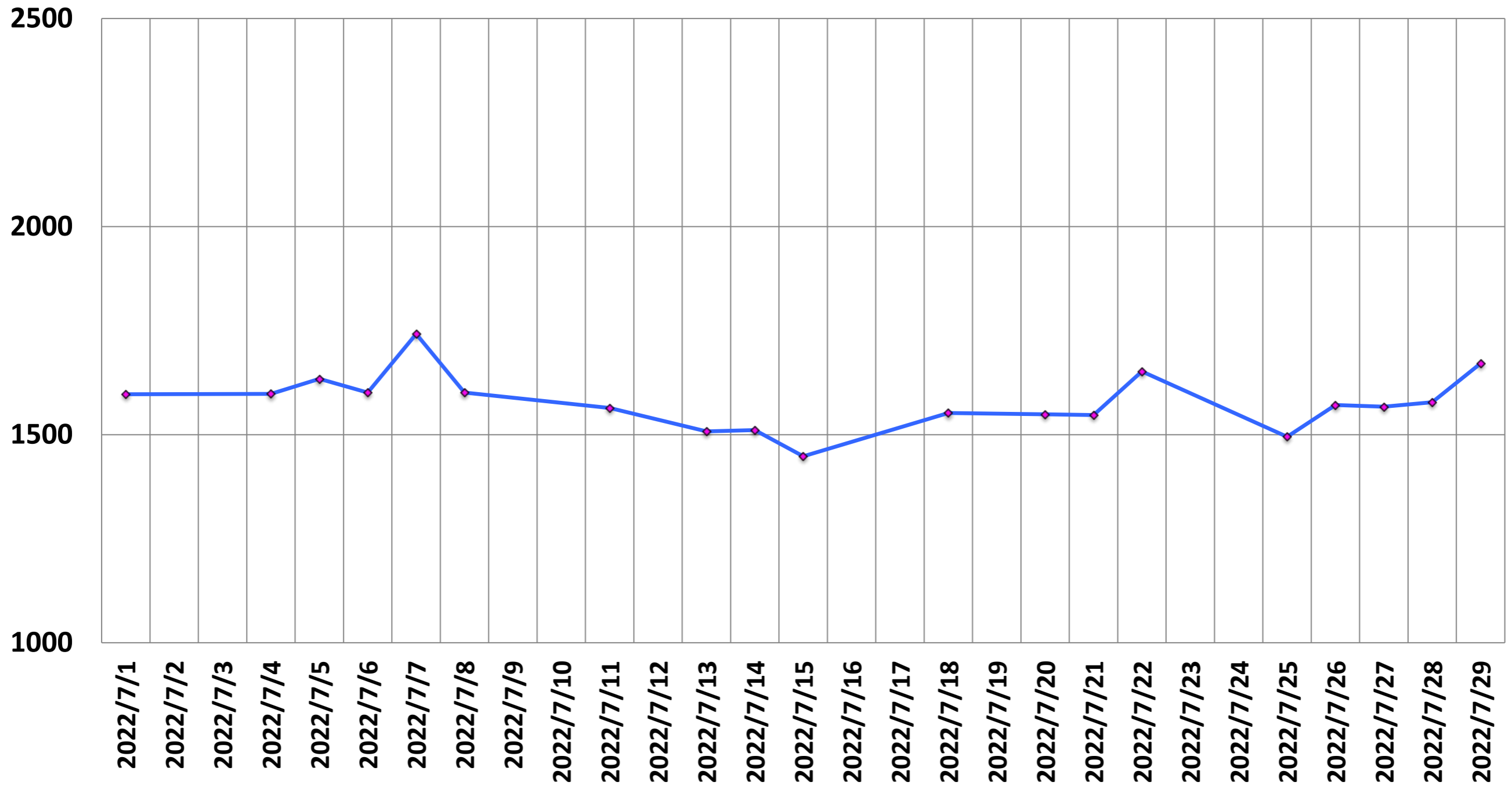
(MHz)

# Central Frequency (MHz)

123.2560  
123.2559  
123.2558  
123.2557  
123.2556  
123.2555  
123.2554  
123.2553  
123.2552  
123.2551  
123.2550



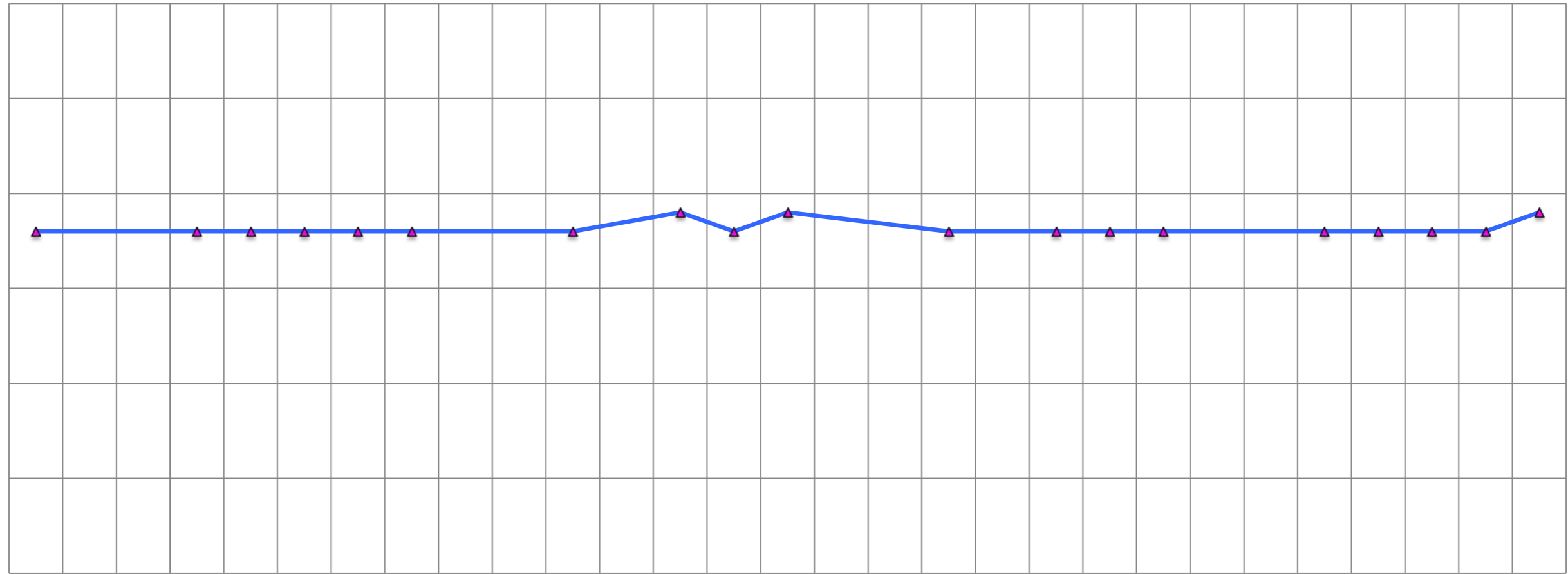
# SNR



# P-P/mean of single voxel (%)

(%)

0.30  
0.25  
0.20  
0.15  
0.10  
0.05  
0.00

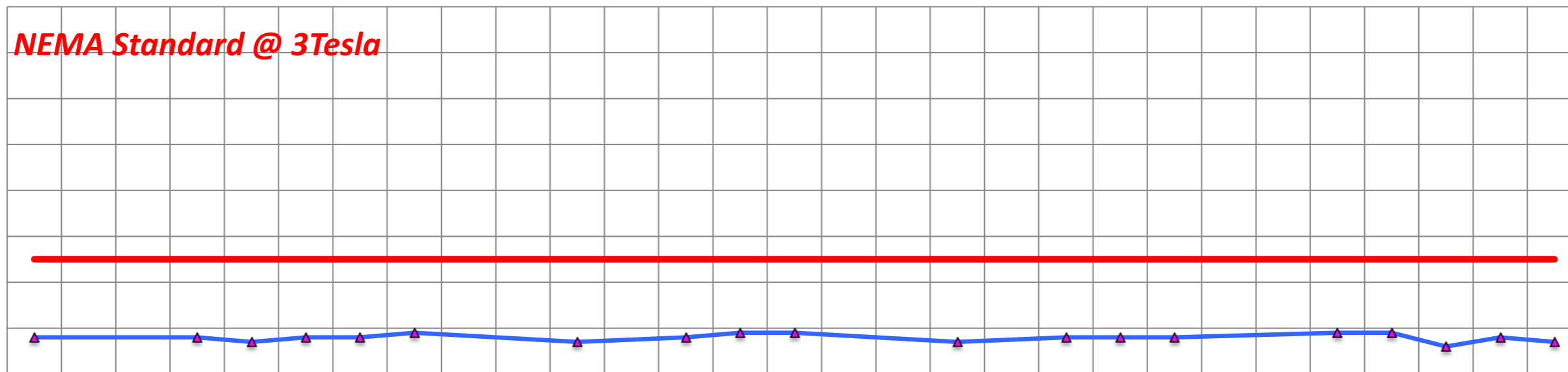


2022/7/1  
2022/7/2  
2022/7/3  
2022/7/4  
2022/7/5  
2022/7/6  
2022/7/7  
2022/7/8  
2022/7/9  
2022/7/10  
2022/7/11  
2022/7/12  
2022/7/13  
2022/7/14  
2022/7/15  
2022/7/16  
2022/7/17  
2022/7/18  
2022/7/19  
2022/7/20  
2022/7/21  
2022/7/22  
2022/7/23  
2022/7/24  
2022/7/25  
2022/7/26  
2022/7/27  
2022/7/28  
2022/7/29

# p2p/mean (%)

(%)

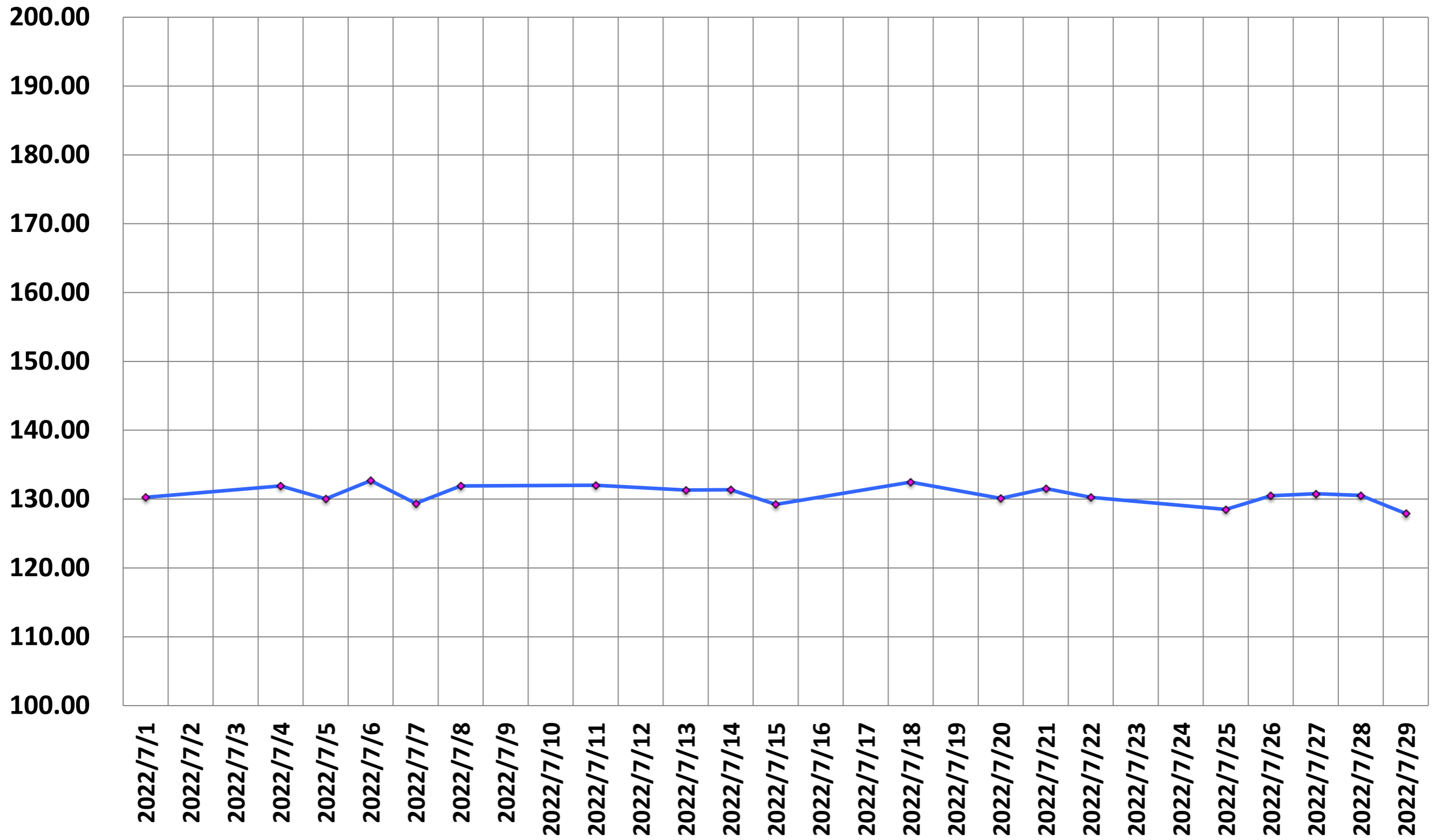
0.8  
0.7  
0.6  
0.5  
0.4  
0.3  
0.2  
0.1  
0



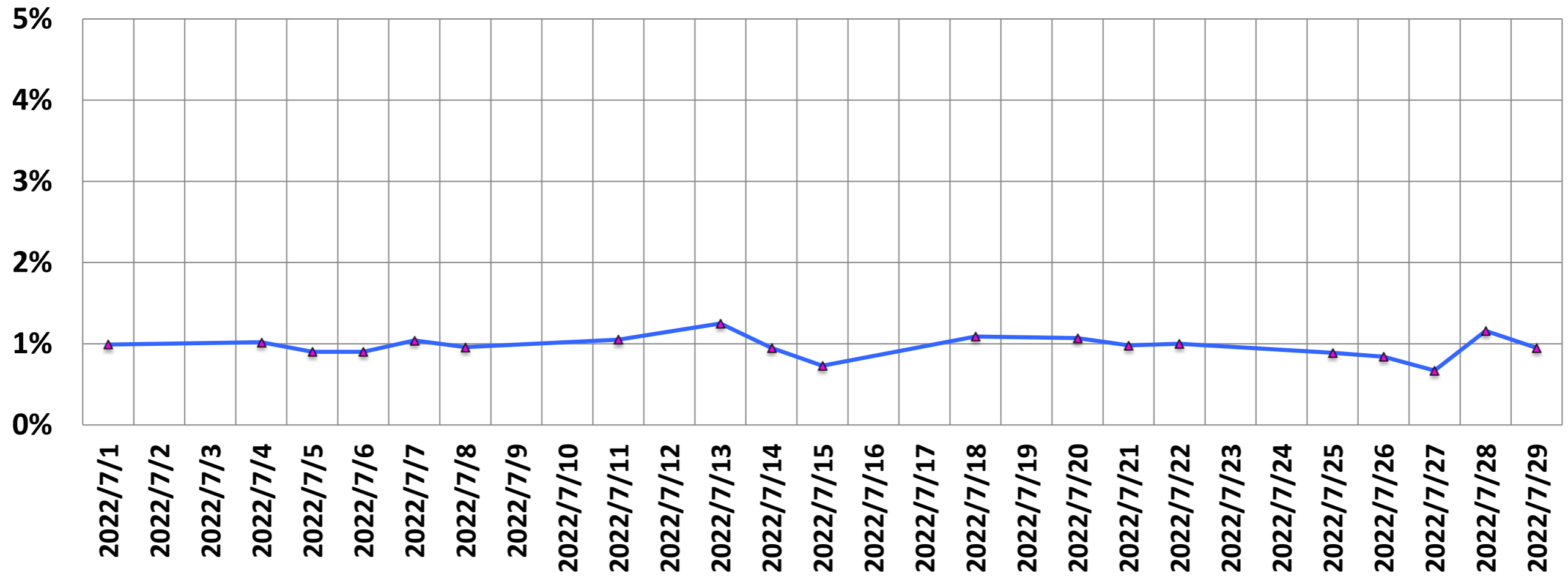
*NEMA Standard @ 3Tesla*

2022/7/1  
2022/7/2  
2022/7/3  
2022/7/4  
2022/7/5  
2022/7/6  
2022/7/7  
2022/7/8  
2022/7/9  
2022/7/10  
2022/7/11  
2022/7/12  
2022/7/13  
2022/7/14  
2022/7/15  
2022/7/16  
2022/7/17  
2022/7/18  
2022/7/19  
2022/7/20  
2022/7/21  
2022/7/22  
2022/7/23  
2022/7/24  
2022/7/25  
2022/7/26  
2022/7/27  
2022/7/28  
2022/7/29

# SGR



# Drift Rate



# He Level (%)

He (%)

95.0

90.0

85.0

80.0

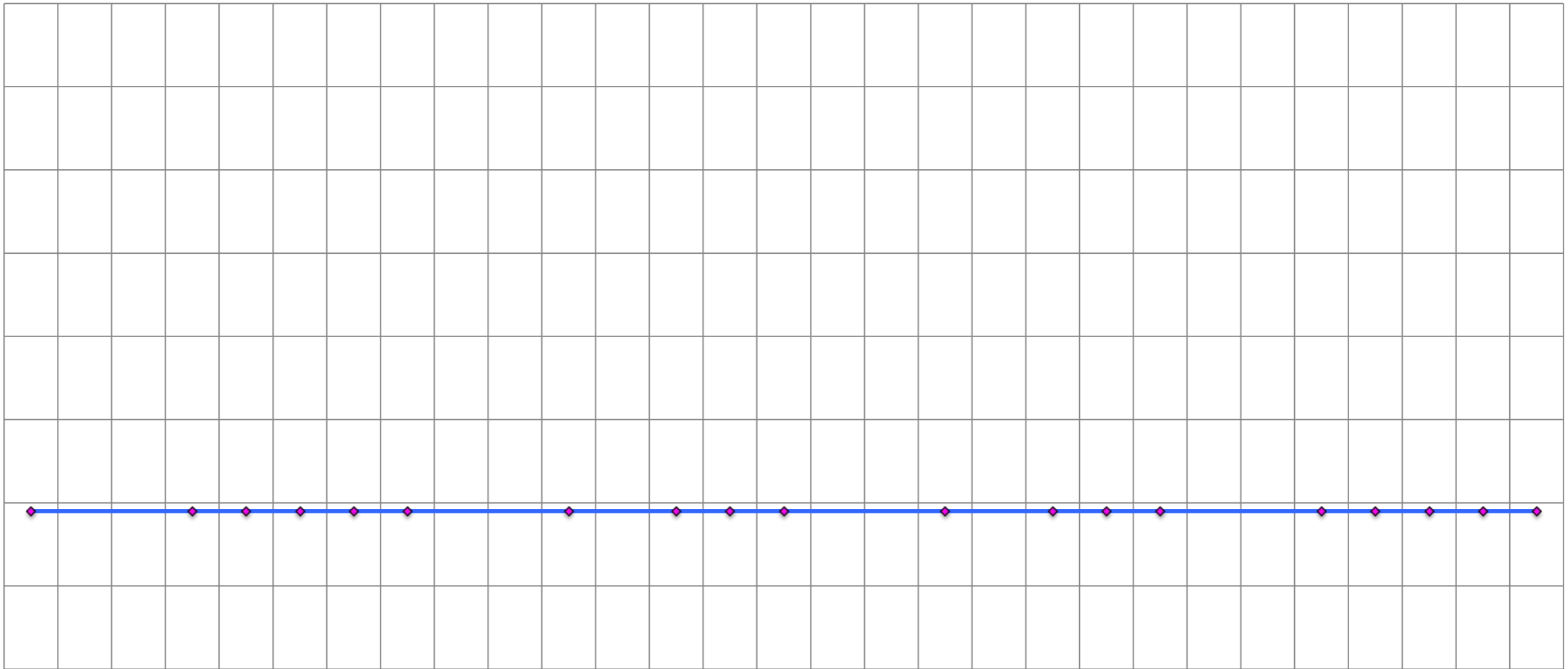
75.0

70.0

65.0

60.0

55.0



2022/7/1

2022/7/2

2022/7/3

2022/7/4

2022/7/5

2022/7/6

2022/7/7

2022/7/8

2022/7/9

2022/7/10

2022/7/11

2022/7/12

2022/7/13

2022/7/14

2022/7/15

2022/7/16

2022/7/17

2022/7/18

2022/7/19

2022/7/20

2022/7/21

2022/7/22

2022/7/23

2022/7/24

2022/7/25

2022/7/26

2022/7/27

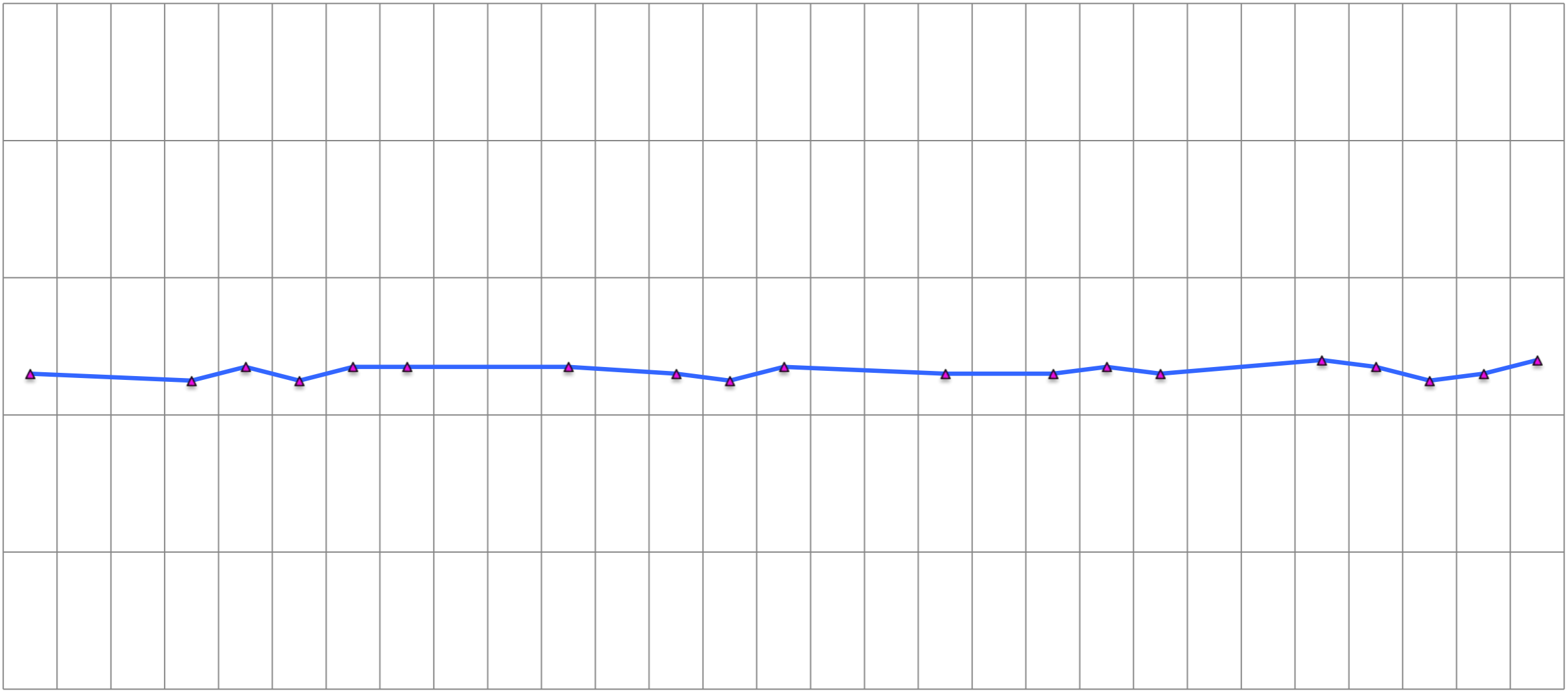
2022/7/28

2022/7/29

# Ghosting (%)

(%)

1.00  
0.80  
0.60  
0.40  
0.20  
0.00



2022/7/1  
2022/7/2  
2022/7/3  
2022/7/4  
2022/7/5  
2022/7/6  
2022/7/7  
2022/7/8  
2022/7/9  
2022/7/10  
2022/7/11  
2022/7/12  
2022/7/13  
2022/7/14  
2022/7/15  
2022/7/16  
2022/7/17  
2022/7/18  
2022/7/19  
2022/7/20  
2022/7/21  
2022/7/22  
2022/7/23  
2022/7/24  
2022/7/25  
2022/7/26  
2022/7/27  
2022/7/28  
2022/7/29